



BOLETIN DIARIO

AÑO XXIV

2ª Epoca

Núm. 14.

MADRID, MARTES 14 de ENERO de 1.975

Dirección postal: Centro de Análisis y Predicción (Ciudad Universitaria), Apartado 285 - Madrid -3 - (España) - Teléfono: 244 35 00
 Fonometeo local: teléfono 094 - Fonometeo España: teléfono 232 69 40 de Madrid

TIEMPO PASADO (de 12 horas de ayer a 12 horas, T.M.G., de hoy):

Nubosidad y precipitaciones: Durante las últimas 24 horas la nubosidad ha sido abundante en todo el país y ha llovido con fuerte intensidad en Galicia, moderadamente en Extremadura y débilmente en Andalucía occidental. Centro y puntos muy dispersos del Duero y sistema Ibérico. Destacan 36 litros por metro cuadrado en Santiago, 25 en Pontevedra, 16 en Coruña, 8 en Lugo y 7 en Cáceres.

Vientos fuertes: Se han registrado rachas de viento fuerte del sur en el Cantábrico oriental, cabeceras del Duero y Ebro, bajo Guadalquivir, sistema Ibérico y La Mancha. En San Sebastián se han registrado rachas del orden de 110 Km/h.

Temperaturas destacables: Superiores a las normales en todo el país, excepto en el valle del Ebro, Baleares y Costa del Sol, donde fueron valores normales, con máximas de ayer comprendidas entre 19ª en Cádiz, Almería y Huelva y 5ª en Logroño y Zaragoza y las mínimas de hoy entre 4ª en Logroño, Zaragoza y Teruel y 14ª en Sevilla y Huelva. En Canarias las máximas fueron de 22ª en Santa Cruz de Tenerife y 23ª en Las Palmas.

PRONOSTICO PARA MAÑANA:

Lluvias en todas las regiones. Serán muy abundantes y frecuentes en la vertiente atlántica y Pirineos y dispersas y débiles en general en el área mediterránea. Las precipitaciones serán de nieve en los sistemas montañosos. Vientos fuertes de componente sur en el área del golfo de Vizcaya.

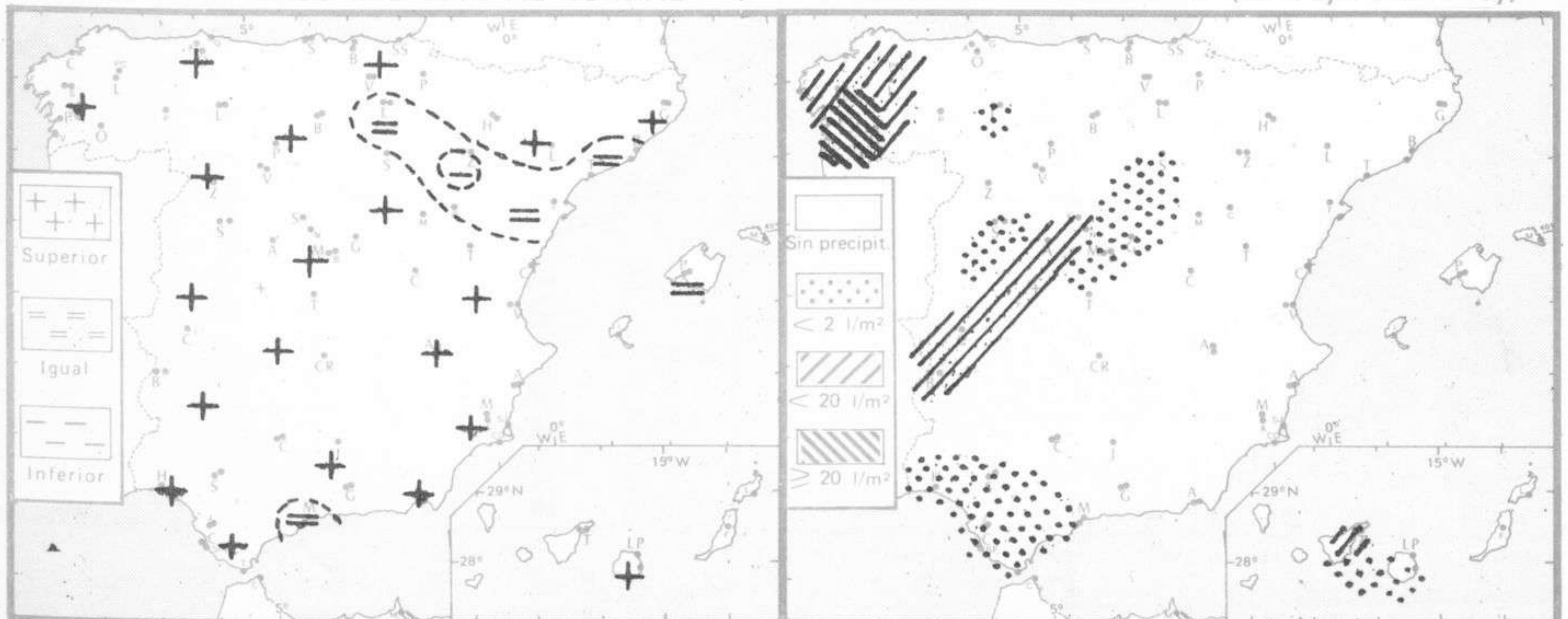
TENDENCIA PARA LOS DIAS16 Y 17..:

Día 16: Continuarán las precipitaciones en todas las regiones aunque descendiendo de intensidad en la vertiente atlántica e intensificándose en el cuadrante nordeste.

Día 17: Nuevo empeoramiento en la vertiente atlántica y Cantábrico. Mejoría en la mediterránea.

NIVEL TERMICO RESPECTO AL NORMAL

AREAS CON PRECIPITACION (12 h. ayer a 12 h. hoy)

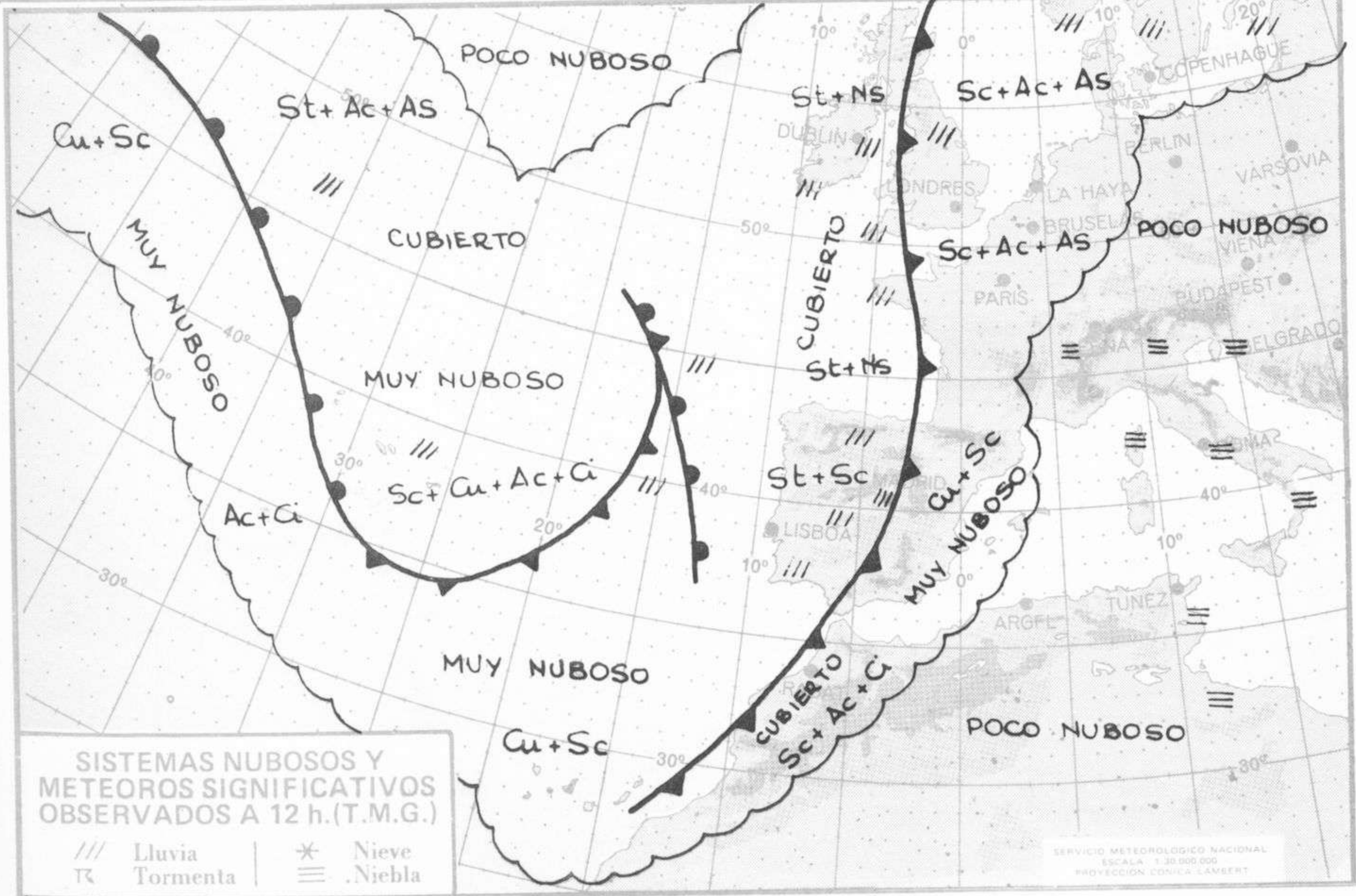


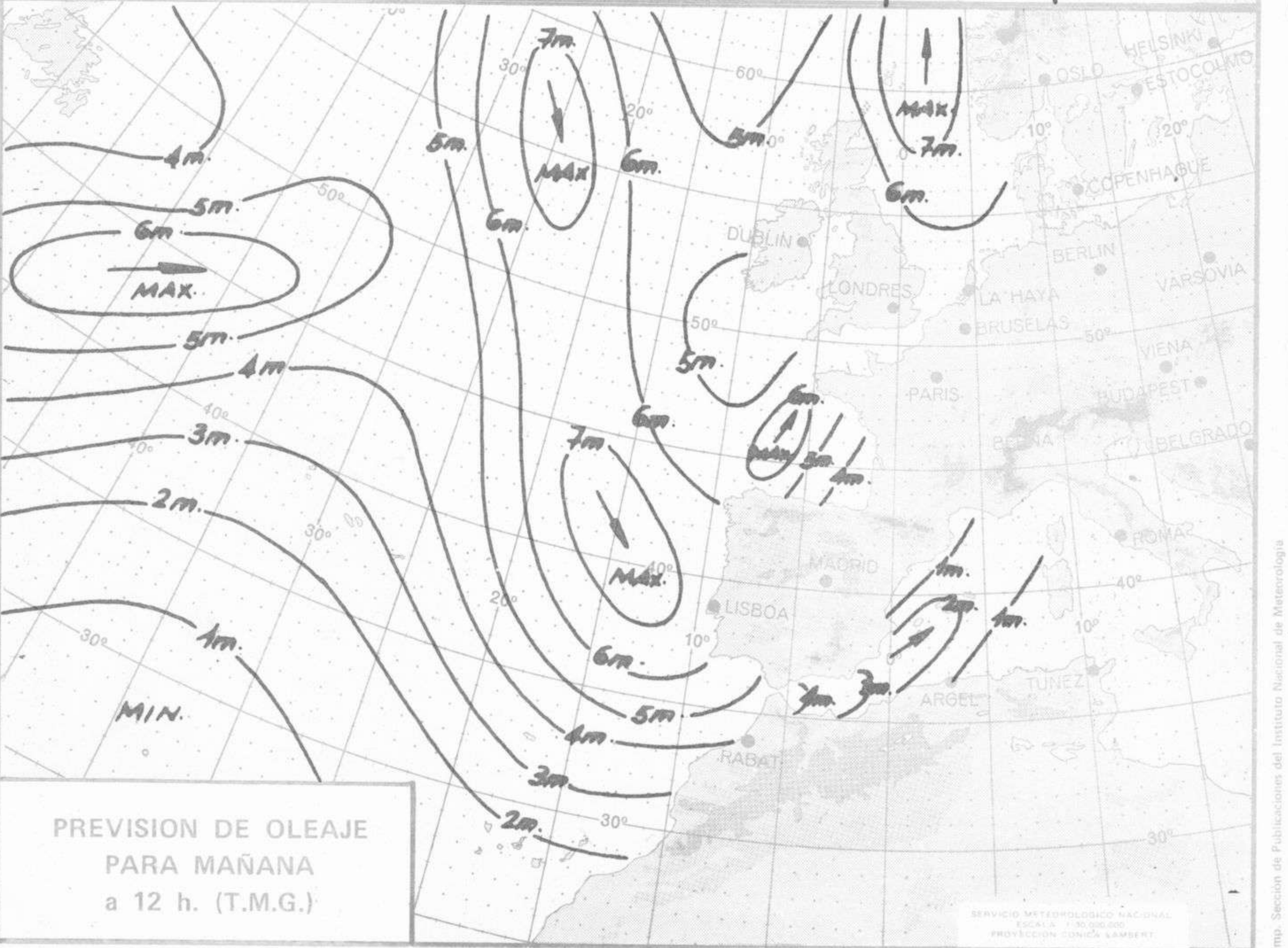
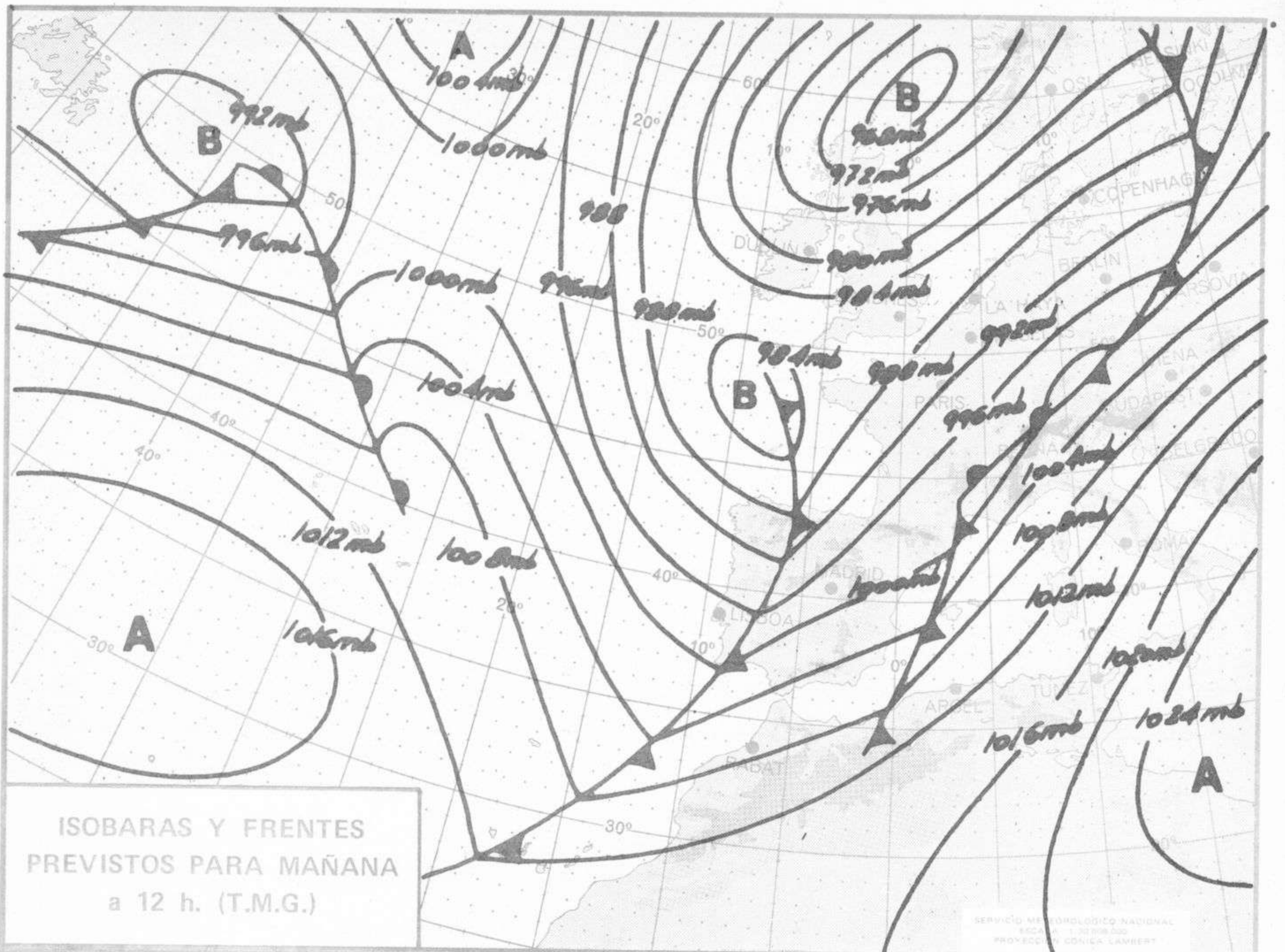
| Estaciones | Temperaturas (°C) | | | Precipitación (l/m²) | | Horas de sol ayer | Meteoros significativos | | | |
|------------------------------|-------------------|---------------|-----------------|----------------------|-----------|-------------------|-------------------------|-----------------|-----------------|-----------------|
| | Máxima de ayer | Mínima de hoy | 12 horas de hoy | 06 ayer a 06 hoy | Hoy 06-12 | | 18 horas de ayer | 00 horas de hoy | 06 horas de hoy | 12 horas de hoy |
| La Coruña | 16 | 11 | 12 | 10 | 6 | 5.0 | ● | ● | ☂ | ☾ |
| Monteventoso | 14 | 8 | | 6 | | | ☂ | | ☂ | |
| Lugo (Punto Centro) | 13 | 11 | 9 | ip | 7 | 7.4 | ☂ | ● | ☂ | ● |
| Santiago de Compostela (A) | 13 | 8 | 9 | 19 | 17 | 1.0 | ☂ | ☂ | ☂ | ☂ |
| Pontevedra | 17 | 12 | 12 | 18 | 7 | 6.2 | ● | | ☂ | ☂ |
| Vigo (A) | 14 | 10 | 12 | 17 | 9 | | ● | ● | ☂ | ● |
| Orense | 15 | 11 | 13 | 6 | 1 | | ● | | ☂ | ● |
| Ponferrada | 12 | 13 | 12 | ip | ip | | ● | | ☂ | ● |
| Asturias (A) | 13 | 9 | 15 | | | 0.4 | ☂ | | ☂ | ● |
| Oviedo | 14 | 12 | 16 | | | 1.0 | ☂ | ☂ | ☂ | ● |
| Santander (A) | 17 | | 21 | | | | ☂ | | ☂ | ☂ |
| Santander | 16 | 14 | 20 | | | 2.2 | ☂ | ☂ | ☂ | ☂ |
| Bilbao (A) | 14 | 12 | 20 | | | 3.3 | ☂ | ☂ | ☂ | ☂ |
| San Sebastian/Igueldo | 14 | 13 | 18 | | | 5.3 | ☂ | ☂ | ☂ | ☂ |
| San Sebastian (A) | 18 | 16 | 20 | | | 6.3 | ☂ | ☂ | ☂ | ☂ |
| León (A) | 7 | | 6 | | 2 | | ☂ | | ☂ | ☂ |
| Zamora | 9 | 6 | 11 | | ip | 2.2 | ☂ | | ☂ | ☂ |
| Palencia | 11 | 10 | 12 | | ip | 5.1 | ☂ | | ☂ | ☂ |
| Burgos (A) | 12 | 7 | 12 | | | 6.8 | ☂ | ☂ | ☂ | ☂ |
| Burgos | 12 | 6 | 12 | | | 6.4 | ☂ | | ☂ | ☂ |
| Valladolid (A) | 11 | 6 | 11 | | ip | 3.2 | ☂ | | ☂ | ☂ |
| Valladolid | 13 | 7 | 13 | | | 2.6 | ☂ | ☂ | ☂ | ☂ |
| Soria | 9 | 4 | 10 | ip | | 1.9 | ☂ | | ☂ | ☂ |
| Salamanca (A) | 9 | 11 | 9 | ip | 1 | 3.5 | ☂ | ☂ | ☂ | ☂ |
| Avila | 7 | 6 | 6 | ip | 3 | 0.0 | ☂ | | ☂ | ☂ |
| Segovia | 12 | 8 | 11 | | | 4.1 | ☂ | | ☂ | ☂ |
| Navacerrada | 1 | 1 | 1 | 3 | 3 | 0.0 | ☂ | ☂ | ☂ | ☂ |
| Madrid/Barajas | 14 | 9 | 11 | 1 | ip | 4.0 | ☂ | ☂ | ☂ | ☂ |
| Madrid (Cdad. Universitaria) | 13 | 8 | 10 | 2 | ip | 2.5 | ☂ | ☂ | ☂ | ☂ |
| Guadalajara | 13 | 7 | | 1 | | | ☂ | | ☂ | ☂ |
| Toledo | 15 | 10 | | | | 4.2 | ☂ | | ☂ | ☂ |
| Cuenca | 11 | 7 | | | | 4.4 | ☂ | | ☂ | ☂ |
| Molina de Aragón | 12 | 2 | | | | 4.0 | ☂ | | ☂ | ☂ |
| Ciudad Real | 14 | 5 | 15 | | | 6.8 | ☂ | ☂ | ☂ | ☂ |
| Albacete (A) | 11 | 6 | 9 | | | 4.2 | ☂ | ☂ | ☂ | ☂ |
| Cáceres | 15 | 11 | 11 | | 7 | | ☂ | ☂ | ☂ | ☂ |
| Badajoz (A) | 18 | 13 | | | | 8.6 | ☂ | | ☂ | ☂ |
| Vitoria (A) | 11 | 8 | 11 | | | | ☂ | | ☂ | ☂ |
| Logroño | 5 | 4 | 11 | ip | | 0.0 | ☂ | | ☂ | ☂ |
| Logroño (A) | 6 | 4 | 12 | | | 0.0 | ☂ | ☂ | ☂ | ☂ |
| Pamplona | 13 | 9 | 13 | | | 5.4 | ☂ | ☂ | ☂ | ☂ |
| Huesca (A) | 9 | 8 | 10 | | | 6.1 | ☂ | | ☂ | ☂ |
| Daroca | 12 | 8 | 11 | | | 4.4 | ☂ | | ☂ | ☂ |
| Zaragoza (A) | 5 | 5 | 12 | ip | | 0.0 | ☂ | ☂ | ☂ | ☂ |
| Zaragoza | 5 | 4 | 13 | | | | ☂ | ☂ | ☂ | ☂ |
| Calamocha | 11 | 5 | 12 | | | 3.6 | ☂ | ☂ | ☂ | ☂ |
| Teruel | 11 | 4 | | | | | ☂ | ☂ | ☂ | ☂ |
| Lérida | 12 | 10 | 14 | | | 4.0 | ☂ | | ☂ | ☂ |
| Gerona (A) | 14 | 7 | 13 | | | | ☂ | | ☂ | ☂ |
| Barcelona | 13 | 10 | 13 | | | | ☂ | | ☂ | ☂ |
| Barcelona (A) | 14 | 7 | 14 | | | 6.0 | ☂ | ☂ | ☂ | ☂ |
| Reus (A) | 15 | 12 | 15 | | | 3.4 | ☂ | | ☂ | ☂ |
| Tarragona | 15 | 5 | | | | 1.5 | ☂ | | ☂ | ☂ |
| Tortosa | 14 | 11 | 14 | | ip | 4.1 | ☂ | | ☂ | ☂ |

SÍMBOLOS UTILIZADOS EN LOS CUADROS DE METEOROS SIGNIFICATIVOS

- ☂ Llovizna
- ☂ Lluvia
- ☂ Nebulina
- ☂ Niebla
- ☂ Relámpagos
- ☂ Tormenta
- ☂ Granizo
- ☂ Nieve
- ☂ Despejado
- ☂ Poco nuboso
- ☂ Nuboso
- ☂ Cubierto
- ☂ NW 30 nudos
- ☂ SW 50 nudos
- ☂ NE 35 nudos
- ☂ SE 65 nudos

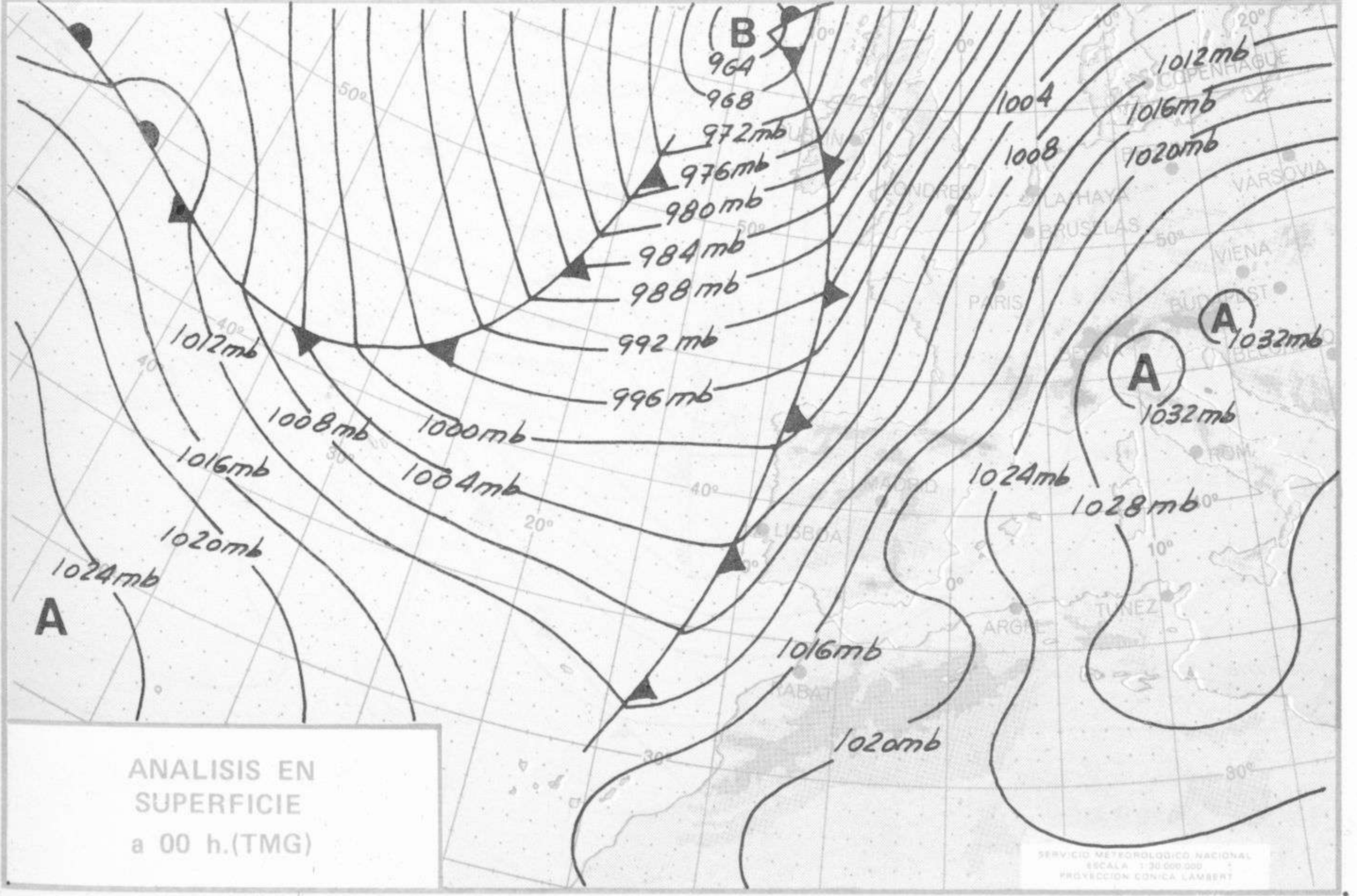
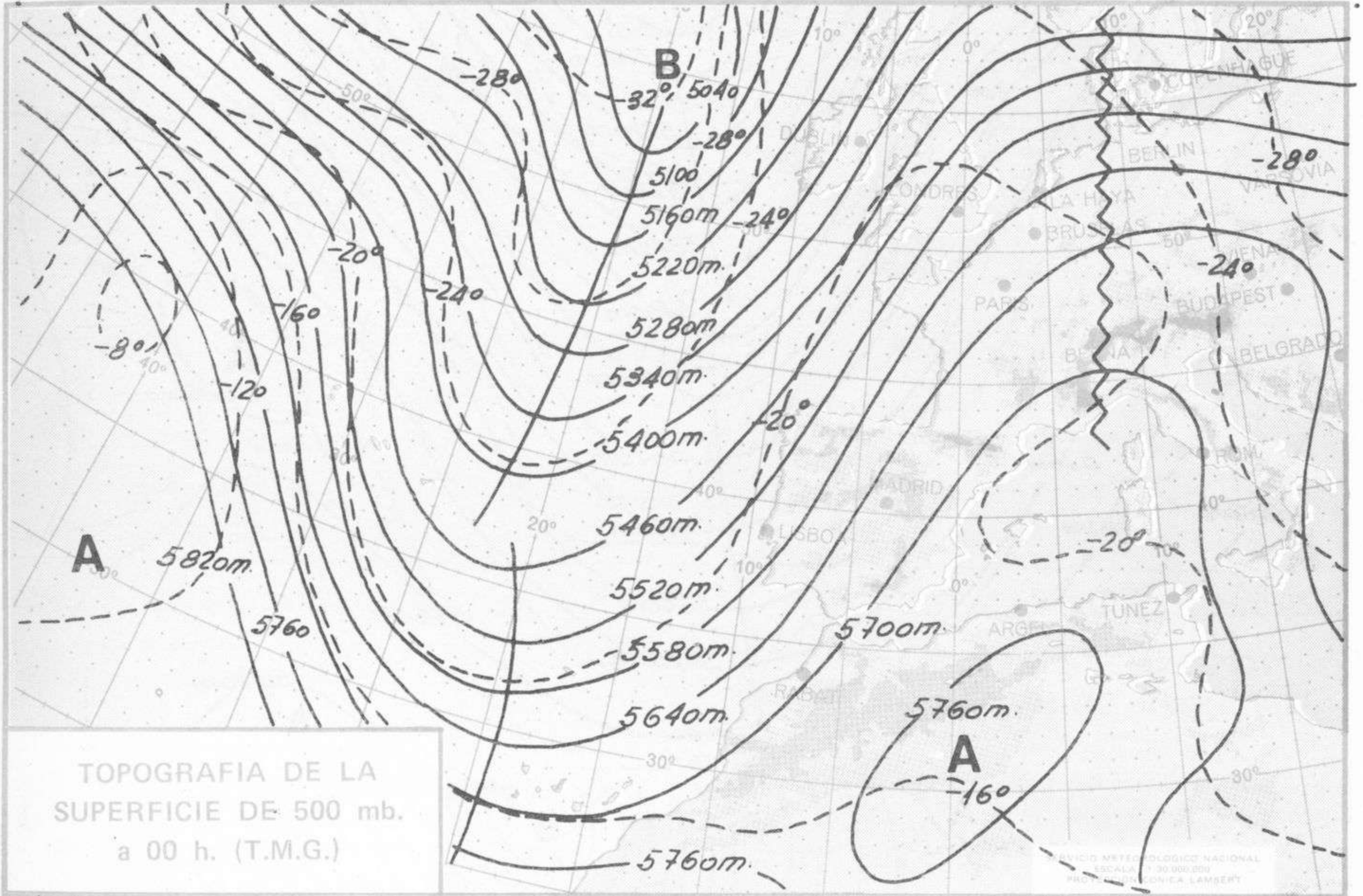
| Estaciones | Temperaturas (°C) | | | Precipitación (l/m²) | | Horas de sol ayer | Meteoros significativos | | | |
|-------------------------------|-------------------|---------------|-----------------|----------------------|-----------|-------------------|-------------------------|-----------------|-----------------|-----------------|
| | Máxima de ayer | Mínima de hoy | 12 horas de hoy | 06 ayer a 06 hoy | Hoy 06-12 | | 18 horas de ayer | 00 horas de hoy | 06 horas de hoy | 12 horas de hoy |
| Castellón de la Plana | 16 | 11 | | | | 4.0 | ● | | ● | |
| Valencia (A) | 15 | 8 | 15 | | | 3.3 | ● | ☉ | ☉ | ● |
| Valencia | 15 | 9 | | | | 2.3 | ● | | | |
| Alicante (A) | 17 | 10 | 17 | | | 3.8 | ● | ☉ | ☉ | ☉ |
| Alicante | 18 | 7 | | | | 3.1 | ☾ | | ☾ | |
| Murcia (A) | 16 | 10 | 14 | | | 1.1 | ☾ | | ☾ | ☾ |
| Murcia | 16 | 10 | 15 | | | 1.7 | ● | | ● | ● |
| Cartagena | 15 | 10 | 14 | | | | ☾ | | ☾ | ☾ |
| San Javier | 16 | 11 | 16 | | | 4.0 | ● | ☉ | ● | ☉ |
| Sevilla (A) | 18 | 14 | 17 | ip | | 4.7 | ● | ☉ | ● | ● |
| Córdoba (A) | 17 | 6 | 15 | ip | | 0.0 | ● | | ● | ● |
| Jaén | 18 | | | | | | ● | | | |
| Granada (A) | 17 | X | 13 | | | | ☾ | ● | ● | ● |
| Huelva | 19 | 14 | | ip | | 5.0 | ● | | ● | |
| Jerez de la Frontera (A) ... | 18 | 14 | 17 | ip | | | ☾ | ☾ | ☾ | ☾ |
| Cádiz | 19 | 13 | 17 | | | 5.0 | ● | ☾ | ● | ● |
| San Fernando | 19 | 14 | 18 | | | 4.2 | ● | | ● | ● |
| Tarifa | 16 | 14 | | | | 3.6 | ☾ | | ☾ | |
| Málaga (A) | 16 | 10 | 15 | ip | ip | 0.0 | ☾ | ☉ | ☉ | ● |
| Almería (A) | 19 | 12 | 17 | | | 7.0 | ● | ☉ | ○ | ● |
| Palma de Mallorca (A) | 17 | 6 | 18 | | | 7.6 | ☾ | ☉ | ☉ | ☉ |
| Mahón (A) | 15 | 10 | 16 | | | 8.3 | ☾ | | ☾ | ☾ |
| Ibiza (A) | 16 | 13 | 18 | | | 2.7 | ● | ☉ | ● | ☉ |
| Santa Cruz de Tenerife (A)... | 16 | 10 | 15 | 5 | | 4.3 | ● | | ☉ | ☉ |
| Santa Cruz de Tenerife | 22 | | 20 | | | | ☾ | ☾ | ☾ | ☾ |
| Las Palmas (A) | 23 | 13 | 19 | ip | | 9.2 | ● | | ● | ● |
| Fuerteventura (A) | 20 | 10 | 18 | | | 8.8 | ● | | ● | ● |
| Lanzarote (A) | 19 | 15 | 17 | | | 8.0 | ☾ | | ☾ | ☾ |
| Ceuta | 15 | 8 | | | | 0.0 | ● | | ● | ● |
| Meiilla | 17 | 11 | 16 | | | 5.4 | ☾ | ☉ | ☉ | ● |

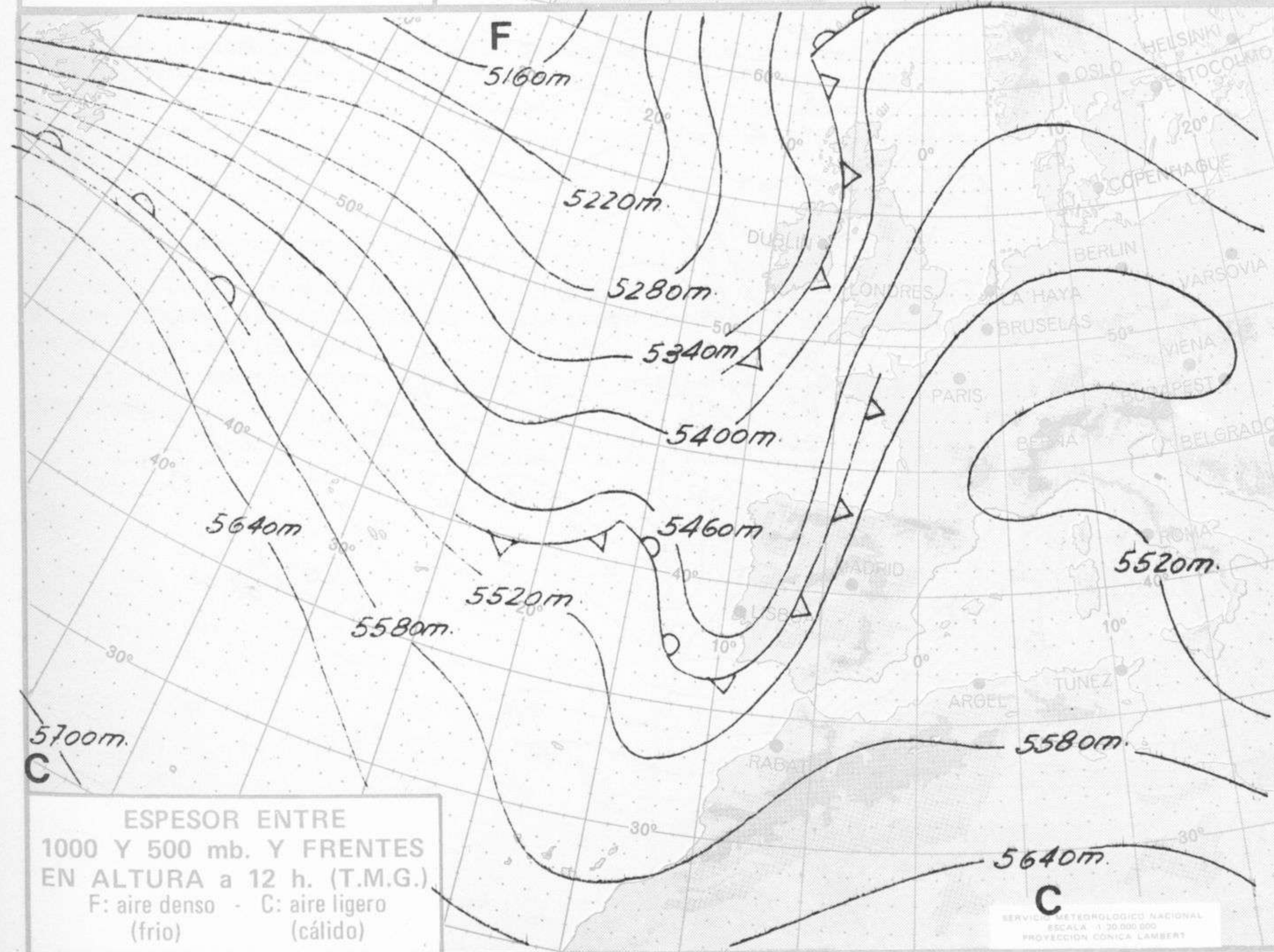
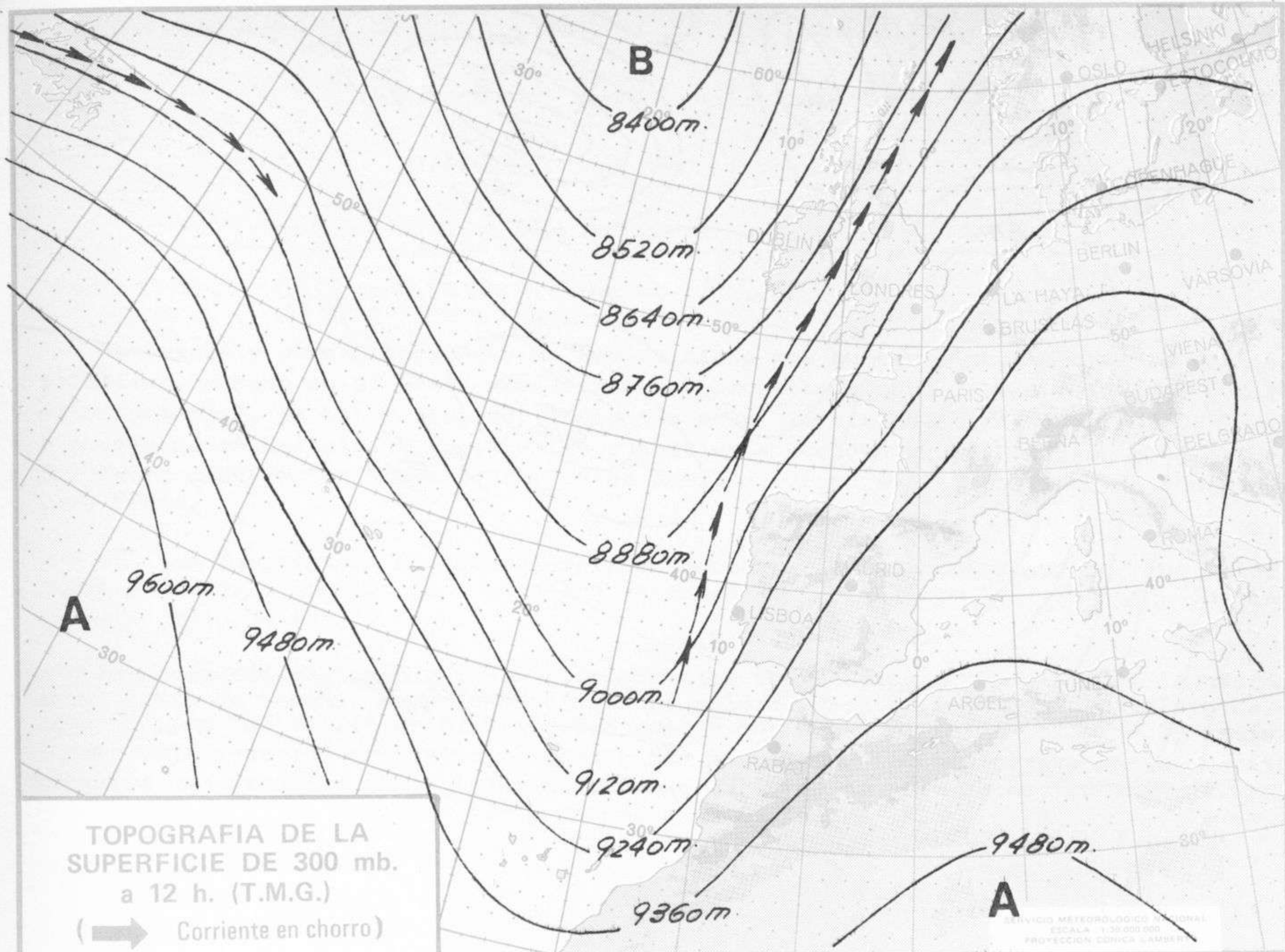


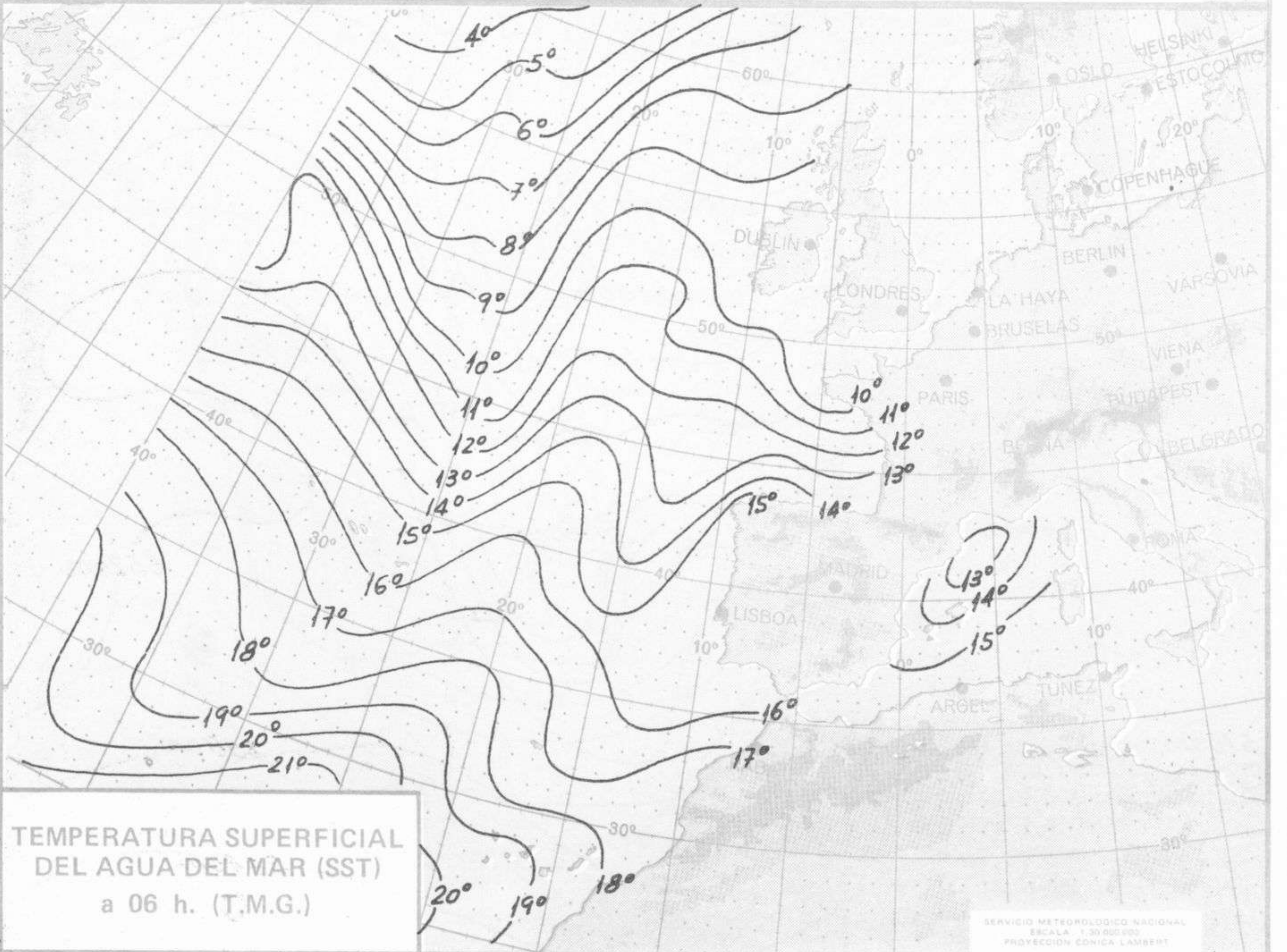
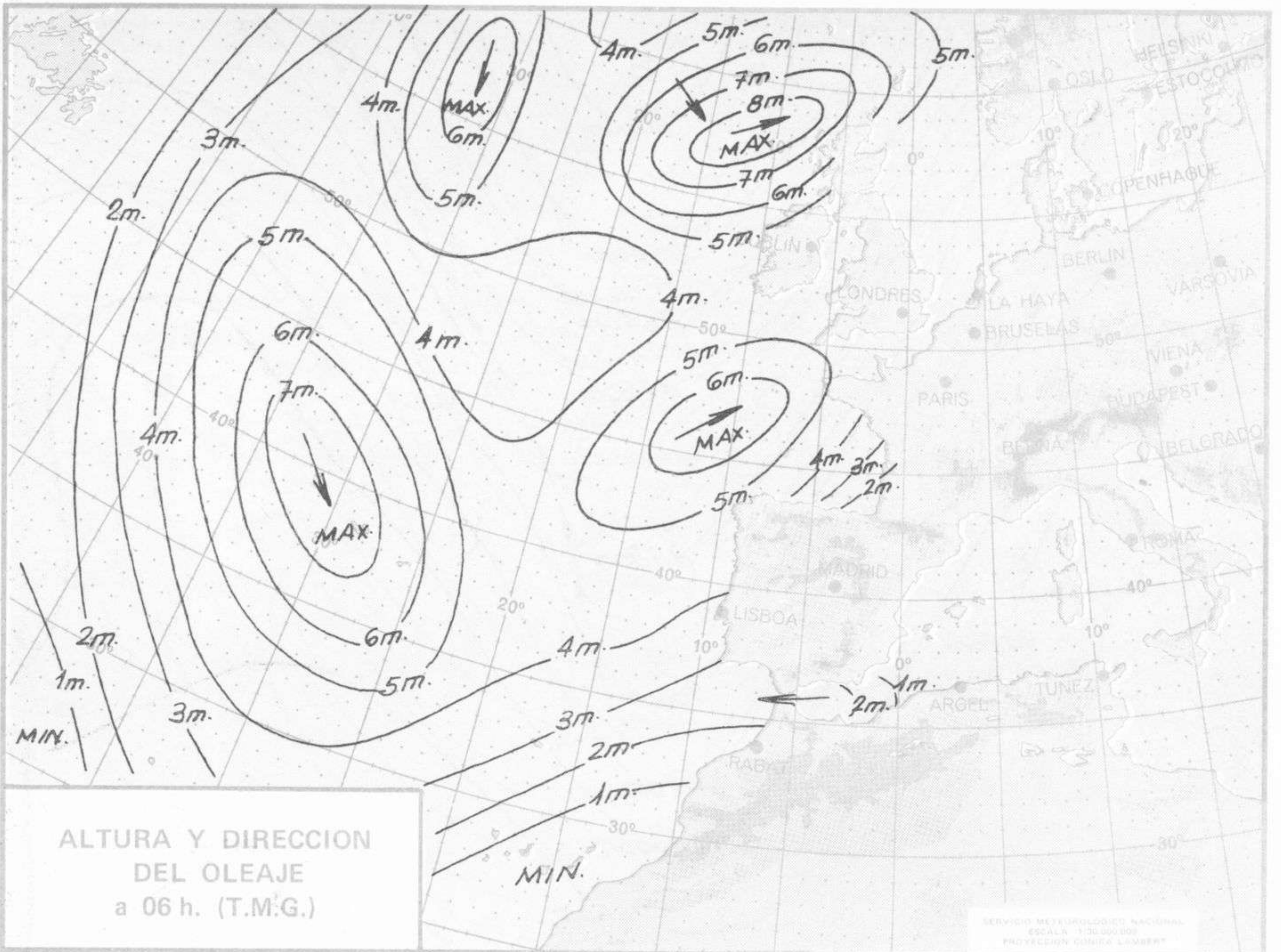




Dirección postal: Centro de Análisis y Predicción (Ciudad Universitaria), Apartado 285 - Madrid - 3 - (España) - Teléfono: 244 35 00
Fonometeo local: teléfono 094 - Fonometeo España: teléfono 232 69 40 de Madrid









COMPLEMENTO A LA INFORMACION TECNICA DIARIA



Dirección postal: Centro de Análisis y Predicción (Ciudad Universitaria), Apartado 285 - Madrid - 3 - (España) - Teléfono: 244 35 00
 Fonometeo local: teléfono 094 - Fonometeo España: teléfono 232 69 40 de Madrid

MADRID, Martes 14 de ENERO de 1.975

| | | R A D I O S O N D E O S | | | | | | | | | | | | | | | |
|-------------------------------|--------|--------------------------|-------|-----|-----------------|-----|-----|--------------------------|-----|----|-----------------|----|-------|------|-------|-----|----|
| | | Sondeos a 00 horas (TMG) | | | | | | Sondeos a 12 horas (TMG) | | | | | | | | | |
| | | Presiones tipo | | | Puntos notables | | | Presiones tipo | | | Puntos notables | | | | | | |
| | | PPP | hhh | TT | DD | dd | ff | PPP | TT | DD | PPP | TT | DD | PPP | TT | DD | |
| La Coruña | 08.001 | 1000 | xxx | | | | | 993 | 15 | 57 | | | | 1000 | xx | | |
| | | 850 | 1365 | 6 | 10 | 20 | 65 | 964 | 15 | 58 | | | | 850 | 1360 | 3 | 00 |
| | | 700 | 2922 | -5 | 58 | 22 | 68 | 822 | 4 | 00 | | | | 700 | 2906 | -7 | 59 |
| | | 500 | 5520 | -18 | 65 | 22 | 60 | 722 | -3 | 00 | | | | 500 | 5450 | -23 | 71 |
| | | 400 | 7150 | -30 | 69 | 21 | 57 | 694 | -5 | 64 | | | | 400 | 7040 | -36 | 71 |
| | | 300 | 9140 | -46 | 64 | 21 | 80 | 657 | -3 | 72 | | | | 300 | 8990 | -49 | 21 |
| | | 250 | 10330 | -56 | | 21 | 38 | 546 | -14 | 42 | | | | 250 | 10180 | -51 | 22 |
| | | 200 | 11710 | -66 | | 24 | 32 | 428 | -19 | 73 | | | | 200 | 11620 | -55 | 21 |
| | | 150 | 13450 | -60 | | 22 | 86 | 342 | -38 | 66 | | | | 150 | 13430 | xx | |
| | | 100 | | | | | | 215 | -65 | | | | | 100 | | | |
| | | 70 | | | | | | 175 | -69 | | | | | 70 | | | |
| | | 50 | | | | | | 134 | -56 | | | | | 50 | | | |
| 30 | | | | | | 129 | -58 | | | | | 30 | | | | | |
| 20 | | | | | | | | | | | | 20 | | | | | |
| Madrid / Barajas | 08.221 | 1000 | 156 | | | | | 945 | 9 | 33 | | | | 1000 | 133 | | |
| | | 850 | 1500 | 5 | 19 | | | 721 | -1 | 00 | | | | 850 | 1487 | 10 | 41 |
| | | 700 | 3067 | -2 | 04 | | | 582 | -10 | 32 | | | | 700 | 3058 | -4 | 51 |
| | | 500 | 5660 | -19 | 46 | | | 383 | -33 | 57 | | | | 500 | 5650 | -19 | 52 |
| | | 400 | 7290 | -31 | 57 | | | | | | | | | 400 | 7270 | -30 | 55 |
| | | 300 | | | | | | | | | | | | 300 | 9260 | -44 | 23 |
| | | 250 | | | | | | | | | | | | 250 | 10460 | -53 | 23 |
| | | 200 | | | | | | | | | | | | 200 | 11860 | -64 | 23 |
| | | 150 | | | | | | | | | | | | 150 | 13620 | -65 | 23 |
| | | 100 | | | | | | | | | | | | 100 | 16150 | -59 | 26 |
| | | 70 | | | | | | | | | | | | 70 | 18400 | -59 | 28 |
| | | 50 | | | | | | | | | | | | 50 | 20510 | -59 | 30 |
| 30 | | | | | | | | | | | | 30 | 23720 | -59 | 26 | | |
| 20 | | | | | | | | | | | | 20 | | | | | |
| Palma de Mallorca / Bon Bonet | 08.302 | 1000 | 216 | 11 | 38 | 06 | 08 | 1020 | 10 | 22 | | | | 1000 | 193 | 16 | 48 |
| | | 850 | 1556 | 6 | 75 | 17 | 14 | 1012 | 12 | 31 | | | | 850 | 1549 | 6 | 50 |
| | | 700 | 3144 | 1 | 74 | 22 | 14 | 918 | 6 | 60 | | | | 700 | 3120 | -1 | 74 |
| | | 500 | 5740 | -21 | 64 | 24 | 12 | 855 | 5 | 74 | | | | 500 | 5710 | -21 | 50 |
| | | 400 | 7350 | -34 | 21 | 21 | 31 | 706 | 1 | 75 | | | | 400 | 7310 | -35 | 21 |
| | | 300 | 9300 | -49 | 37 | 23 | 27 | 436 | -29 | 62 | | | | 300 | 9250 | -50 | 56 |
| | | 250 | 10470 | -48 | 50 | 25 | 33 | 392 | -35 | 23 | | | | 250 | 10420 | -59 | 24 |
| | | 200 | 11850 | -xx | | 25 | 39 | 236 | -61 | | | | | 200 | 11780 | -69 | 23 |
| | | 150 | 13590 | -65 | | 25 | 41 | 172 | -69 | | | | | 150 | 13510 | -64 | 25 |
| | | 100 | 16090 | -62 | | 23 | 35 | 133 | -61 | | | | | 100 | 16020 | -63 | 25 |
| | | 70 | 18290 | -64 | | 25 | 21 | | | | | | | 70 | 18230 | -61 | 28 |
| | | 50 | | | | | | | | | | | | 50 | 20320 | -62 | 24 |
| 30 | | | | | | | | | | | | 30 | | | | | |
| 20 | | | | | | | | | | | | 20 | | | | | |
| Santa Cruz de Tenerife | 60.020 | 1000 | | | | | | | | | | | | 1000 | 154 | 18 | 57 |
| | | 850 | | | | | | | | | | | | 850 | 1516 | 5 | 00 |
| | | 700 | | | | | | | | | | | | 700 | 3103 | 3 | 29 |
| | | 500 | | | | | | | | | | | | 500 | 5710 | -19 | 28 |
| | | 400 | | | | | | | | | | | | 400 | 7330 | -33 | 28 |
| | | 300 | | | | | | | | | | | | 300 | 9300 | -49 | 28 |
| | | 250 | | | | | | | | | | | | 250 | 10470 | -57 | 32 |
| | | 200 | | | | | | | | | | | | 200 | 11870 | -59 | 32 |
| | | 150 | | | | | | | | | | | | 150 | 13670 | -60 | 27 |
| | | 100 | | | | | | | | | | | | 100 | 16160 | -63 | 27 |
| | | 70 | | | | | | | | | | | | 70 | 18370 | xx | |
| | | 50 | | | | | | | | | | | | 50 | | | |
| 30 | | | | | | | | | | | | 30 | | | | | |
| 20 | | | | | | | | | | | | 20 | | | | | |

| V I E N T O E N A L T I T U D | | | | | | | | | | | | | | | | |
|-------------------------------|---------------|------------|----------|--------------|---------------|---------------|---------------|---------------|---------------|---------------|---------------|---------------|----------------|----------------|----------------|----------------|
| Estación | Tipo de Sonda | Indicativo | dia/hora | Tierra dd ff | 1.000m. dd ff | 1.500m. dd ff | 2.000m. dd ff | 3.000m. dd ff | 4.000m. dd ff | 5.500m. dd ff | 7.000m. dd ff | 9.000m. dd ff | 10.500m. dd ff | 12.000m. dd ff | 13.500m. dd ff | 16.000m. dd ff |
| | | | | | | | | | | | | | | | | |

| Estaciones | SYNOPSIS de 00 horas (T.M.G.) | | | | | | | | SYNOPSIS de 06 horas (T.M.G.) | | | | | | | | |
|-----------------------|-------------------------------|-------|-------|-------|-------|-------|-------|-------------|-------------------------------|-------|-------|-------|-------|-------|-------|-------|-------|
| LA CORUÑA | 03001 | 71403 | 62031 | 66415 | 75533 | 04630 | 70059 | 91397 | 03001 | 32303 | 58638 | 37111 | 35489 | 39122 | 71011 | 31336 | 94050 |
| LUGO P. CENTR. | 03005 | 71320 | 62022 | 69113 | 79430 | 04413 | 70059 | | 03005 | 41522 | 58615 | 09512 | 37459 | 10521 | 70511 | 34310 | |
| SANTIAGO DE C. (A) | 03042 | 81340 | 62022 | 02914 | 86479 | 05720 | 70059 | | 03042 | 32135 | 58635 | 37059 | 73329 | 38573 | 71938 | 34310 | |
| VIGO (A) | 03045 | 61824 | 60021 | 01215 | 65610 | 10720 | 70059 | 86640 | 03045 | 81815 | 58633 | 39310 | 84459 | 10313 | 71710 | 35310 | |
| PONFERRADA | | | | | | | | | 03053 | 61445 | 75733 | 00214 | 55400 | 30727 | 69378 | 79713 | |
| GIJON | | | | | | | | | 05023 | 51835 | 70011 | 23414 | 47911 | 26306 | 70014 | 94022 | |
| SANTANDER | 08023 | 61820 | 70021 | 07416 | 20912 | 06823 | 70059 | | 08025 | 71322 | 70022 | 05714 | 33378 | 34309 | 70012 | 34333 | |
| BILBAC (A) | 08025 | 61620 | 70031 | 10513 | 00970 | 04709 | 70059 | | 08027 | 31548 | 75332 | 35514 | 70378 | 36730 | 70013 | 34354 | |
| S. SEBASTIAN (IGDC.) | 08027 | 41848 | 75012 | 09513 | 00978 | 03203 | 70059 | | 08029 | 81520 | 56022 | 06017 | 33598 | 36713 | 70016 | 94063 | |
| S. SEBASTIAN (A) | | | | | | | | | | | | | | | | | |
| LEON (A) | | | | | | | | | 03130 | 41810 | 60020 | 07512 | 30742 | 34512 | 59332 | 70006 | 94022 |
| ZAMORA | | | | | | | | | 03075 | 02224 | 05030 | 42909 | 00930 | 32711 | 69375 | 70007 | 94065 |
| BURGOS (A) | 03141 | 22008 | 59011 | 11110 | 20930 | 04723 | 69305 | 70059 | 03141 | 71816 | 59020 | 06511 | 00930 | 33723 | 69463 | 70007 | 94026 |
| VALLADOLID | | | | | | | | | 03143 | 70013 | 45206 | 25400 | 03731 | 68923 | 79404 | 94019 | |
| SORIA | | | | | | | | | 08202 | 51810 | 65011 | 33311 | 35570 | 05721 | 59153 | 94011 | 94035 |
| SALAMANCA (A) | 09202 | 41721 | 65011 | 41511 | 25570 | 05733 | 69233 | 79788 95490 | | | | | | | | | |
| AVILA | | | | | | | | | 08213 | 51817 | 53021 | 43609 | 25410 | 03720 | 68958 | 70008 | 94041 |
| SEGOVIA | | | | | | | | | 03215 | 81616 | 01022 | 45201 | 47058 | 01721 | 68053 | 70001 | 94000 |
| NAVACERRADA | | | | | | | | | 08221 | 61616 | 70022 | 12511 | 25531 | 04708 | 69456 | 70109 | 94040 |
| MADRID (A) | 08221 | 80806 | 65608 | 16809 | 55544 | 07716 | 69490 | 70059 | 08272 | 21423 | 65131 | 13510 | 25600 | 04400 | 69504 | 70010 | 94042 |
| TOLEDO | | | | | | | | | 08231 | 81419 | 70031 | 49608 | 42510 | 02719 | 69013 | 70007 | 95095 |
| CUENCA | | | | | | | | | 03232 | 82008 | 70032 | 47610 | 80758 | 02713 | 54936 | 70002 | 13497 |
| MOLINA DE ARAGON | | | | | | | | | 08343 | 60902 | 09012 | 17408 | 37523 | 03703 | 69435 | 70005 | 33795 |
| CIUDAD REAL | 08343 | 71807 | 75031 | 10012 | 37523 | 05807 | 69455 | 93795 | 08380 | 21429 | 62011 | 22607 | 10944 | 07805 | 69307 | 70059 | |
| ALBACETE (A) | 08280 | 21429 | 62011 | 22607 | 10944 | 07805 | 69307 | 70059 | 08230 | 21014 | 62021 | 21007 | 15440 | 06903 | 79371 | 70006 | 94042 |
| CACERES | 08261 | 02218 | 70000 | 11012 | 00930 | 07720 | 70059 | | 08261 | 32224 | 70022 | 09215 | 30978 | 05711 | 70011 | | |
| BADAJEZ (A) | | | | | | | | | 08330 | 81808 | 65021 | 10414 | 33500 | 07710 | 70013 | 94036 | |
| VITORIA (A) | | | | | | | | | 08080 | 31520 | 50021 | 09109 | 39400 | 04925 | 69475 | 70003 | |
| LOGROÑO (A) | 08084 | 90916 | 30054 | 19506 | 87488 | 04805 | | | 08084 | 81330 | 56054 | 12509 | 97488 | 05721 | 70004 | 94000 | |
| PAMPLONA | | | | | | | | | 08086 | 41621 | 63021 | 13811 | 48300 | 05716 | 70009 | 94054 | |
| HUESCA (A) | | | | | | | | | 08094 | 31124 | 65022 | 20003 | 35588 | 07503 | 69546 | 70008 | 94061 |
| ZARAGOZA (A) | 08160 | 91306 | 01454 | 21605 | 98398 | 05713 | 70059 | | 08160 | 31412 | 59052 | 18307 | 55578 | 07717 | 70005 | 94000 | |
| CALAMONCHA | 08233 | 81832 | 70022 | 50607 | 30942 | 05704 | 69122 | 70059 | 08233 | 81820 | 70022 | 48307 | 25542 | 03715 | 69099 | 70005 | 94036 |
| LERIDA | | | | | | | | | 08171 | 70000 | 70031 | 21511 | 75500 | 07608 | 70010 | 94040 | |
| GERONA | | | | | | | | | 08183 | 11933 | 30011 | 22903 | 10940 | 08229 | 70007 | | |
| BARCELONA | 08180 | 80000 | 20032 | 24511 | 88588 | 10805 | 70059 | | 08180 | 50000 | 50012 | 23511 | 68500 | 09704 | 70013 | | |
| BARCELONA (A) | 08181 | 50000 | 40102 | 23909 | 58400 | 08707 | 70059 | | 08181 | 30104 | 30101 | 22908 | 29530 | 07707 | 70007 | 94060 | |
| REUS (A) | | | | | | | | | 08175 | 81606 | 60022 | 23012 | 68538 | 10709 | 70012 | 94034 | |
| TORTOSA | | | | | | | | | 08238 | 71806 | 56022 | 20711 | 25528 | 10706 | 70011 | 94041 | |
| CASTELLON | | | | | | | | | 08286 | 33102 | 60032 | 22512 | 59578 | 10607 | 70011 | 82995 | 33895 |
| VALENCIA | | | | | | | | | 08285 | 80000 | 55052 | 20611 | 85588 | 10705 | 70009 | 94023 | |
| ALICANTE (A) | 08360 | 13608 | 60011 | 22312 | 16400 | 10717 | 70059 | | 08360 | 60310 | 62031 | 20112 | 56500 | 08715 | 70010 | 94038 | |
| MURCIA (A) | | | | | | | | | 08429 | 70000 | 65031 | 19910 | 70610 | 09608 | 70010 | 94011 | |
| SAN JAVIER (A) | 08433 | 33406 | 62011 | 22012 | 34500 | 11705 | 70000 | 83620 | 08433 | 73606 | 12031 | 20013 | 44500 | 11713 | 70011 | 84620 | 94040 |
| SEVILLA (A) | | | | | | | | | 08391 | 41604 | 59046 | 15115 | 15630 | 09709 | 79788 | 81640 | 83359 |
| CORDOBA | 08419 | 70908 | 70021 | 20809 | 50952 | 07008 | 69534 | 70059 | 08391 | 81616 | 59042 | 13215 | 47478 | 09505 | 70014 | 82718 | 32630 |
| GRANADA (A) | | | | | | | | | 08410 | 81504 | 65026 | 44708 | 37588 | 01103 | 63815 | 79306 | 94000 |
| HUELVA | | | | | | | | | 08419 | 70000 | 70021 | 16909 | 50952 | 06619 | 69515 | | |
| JEREZ DE LA F. (A) | 08451 | 31330 | 60012 | 16114 | 30930 | 11707 | 79788 | 83357 | 08393 | 81420 | 57021 | 11715 | 85500 | 12308 | 70014 | 94050 | |
| CADIZ | | | | | | | | | 08451 | 81310 | 70032 | 12814 | 85588 | 11713 | 70013 | 88622 | 94050 |
| TARIFA | | | | | | | | | 08458 | 40923 | 68021 | 17515 | 49500 | 12607 | 70014 | 94036 | 91837 |
| MALAGA (A) | 08482 | 60303 | 60050 | 19514 | 27400 | 13721 | 79398 | 84620 | 08482 | 10000 | 58011 | 17110 | 15500 | 09711 | 79310 | 81625 | 94000 |
| ALMERIA (A) | 08487 | 23506 | 70011 | 19913 | 00930 | 09712 | 70059 | | 08487 | 90510 | 70000 | 17512 | 00900 | 07711 | 70012 | 94070 | |
| PALMA DE M. (A) | 08306 | 60000 | 62022 | 26009 | 55570 | 08604 | 70059 | | 08306 | 40000 | 62022 | 24310 | 35570 | 09503 | 70005 | 94076 | |
| MAHON (A) | 08314 | 21508 | 65020 | 26211 | 25500 | 09805 | 70059 | | 08314 | 61410 | 65030 | 24613 | 65500 | 11707 | 70010 | 94083 | |
| IBIZA (A) | 08373 | 31110 | 70021 | 23213 | 35400 | 11815 | 70059 | 83615 | 08373 | 70806 | 65031 | 21014 | 76300 | 13715 | 70013 | 87708 | 94027 |
| IZANA | | | | | | | | | 60010 | 02509 | 89000 | 06401 | 00900 | 53505 | 57643 | 79700 | 94065 |
| S. C. DE TENERIFE (A) | 60015 | 83222 | 20552 | 16012 | 86388 | 12009 | 69447 | 70488 | 60015 | 23016 | 65015 | 16511 | 15350 | 09305 | 69451 | 70510 | 94043 |
| S. C. DE TENERIFE | 60020 | 73414 | 90022 | 14218 | 78588 | 13104 | 70059 | 91818 | | | | | | | | | |
| LAS PALMAS (A) | 60030 | 30000 | 65020 | 16616 | 15530 | 12009 | 70059 | 91887 | | | | | | | | | |
| FUERTEVENTURA (A) | | | | | | | | | 60030 | 73610 | 57638 | 17514 | 78588 | 13209 | 79713 | 94092 | 91886 |
| LANZAROTE (A) | | | | | | | | | 60040 | 80000 | 60031 | 14416 | 83500 | 12204 | 70010 | 94088 | |
| | | | | | | | | | 60040 | 40000 | 65020 | 15216 | 25570 | 14401 | 70015 | 94077 | |
| CEUTA | | | | | | | | | 60338 | 21402 | 70012 | 16511 | 25400 | 11709 | 70011 | 82619 | 94054 |
| MELILLA | 60096 | 03402 | 60000 | 17816 | 00930 | 16103 | | | 60096 | 80202 | 35454 | 17116 | 88888 | 15507 | 70016 | 94009 | |
| VILLA CISNEROS (A) | | | | | | | | | | | | | | | | | |

| Estaciones | SYNOPSIS de 12 horas (T.M.G.) | | | | | | | | SYNOPSIS de 18 horas (T.M.G.) | | | | | | | | |
|--------------------|-------------------------------|-------|-------|-------|-------|-------|-------|-------|-------------------------------|-------|-------|-------|-------|-------|-------|-------|--|
| LA CORUÑA | 08008 | 71910 | 65216 | 02209 | 45470 | 06113 | 70788 | | 08001 | 31612 | 75011 | 99013 | 38500 | 07715 | 70614 | 91828 | |
| LUGO P. CENTR. | 08042 | 51210 | 62016 | 03109 | 48372 | 08213 | 71788 | | 08003 | 51310 | 66022 | 00309 | 38470 | 06613 | 71313 | | |
| SANTIAGO DE C. (A) | | | | | | | | | 08042 | 51816 | 62021 | 01910 | 49372 | 08713 | 71812 | | |
| VIGO (A) | | | | | | | | | 08045 | 51816 | 70021 | 00111 | 48520 | 09716 | 70913 | 84820 | |
| PONFERRADA | 08053 | 72313 | 68258 | 04712 | 79500 | 05215 | 65416 | 79788 | 08053 | 51509 | 62258 | 03911 | 59500 | 06811 | 69405 | 79714 | |
| GIJON | | | | | | | | | | | | | | | | | |