



BOLETIN DIARIO

MADRID, MIERCOLES 25 de AGOSTO de 1.976.

2ª Epoca
Núm. 238.

Dirección postal: Centro de Análisis y Predicción (Ciudad Universitaria), Apartado 285 - Madrid - 3 - (España) - Teléfono: 244 35 00
Fonometeo local: teléfono 094 - Fonometeo España: teléfono 232 69 40 de Madrid

TIEMPO PASADO (de 12 horas de ayer a 12 horas, T.M.G., de hoy):

Nubosidad y precipitaciones: Durante las últimas 24 horas se han registrado, precipitaciones, frecuentemente de origen tormentoso en todo el país, excepto en la baja Extremadura, gran parte de Andalucía e islas orientales del archipiélago Canario. Destacan 93 litros por metro cuadrado en Reus, 59 en Sierra Alfabia, 56 en Pamplona, 42 en Tarragona, 25 en Oviedo, 24 en Vitoria y Gerona, 23 en Logroño, 22 en Bilbao y 20 en Valencia.

Vientos fuertes: No se han registrado.

Temperaturas destacables: Inferiores a las normales en todo el país, excepto en los litorales de Galicia, Cantábrico, Sudeste y Costa del Sol, cabecera del Duero y Ebro y provincias insulares, con máxima de ayer comprendida entre 32º en Málaga y 19º en Avila y las mínimas de hoy entre 21º en Cádiz, Murcia, Almería y Palma de Mallorca y 9º en Avila.

PRONOSTICO PARA MAÑANA:

Alguna nubosidad en Galicia y litoral cantábrico. En los litorales catalán, de Levante, Sudeste y Baleares, nubosidad variable. En las demás regiones del interior escasa nubosidad de evolución diurna. Tendencia a viento de Levante en el Estrecho. Temperaturas en ligero ascenso.

27 Y 28.

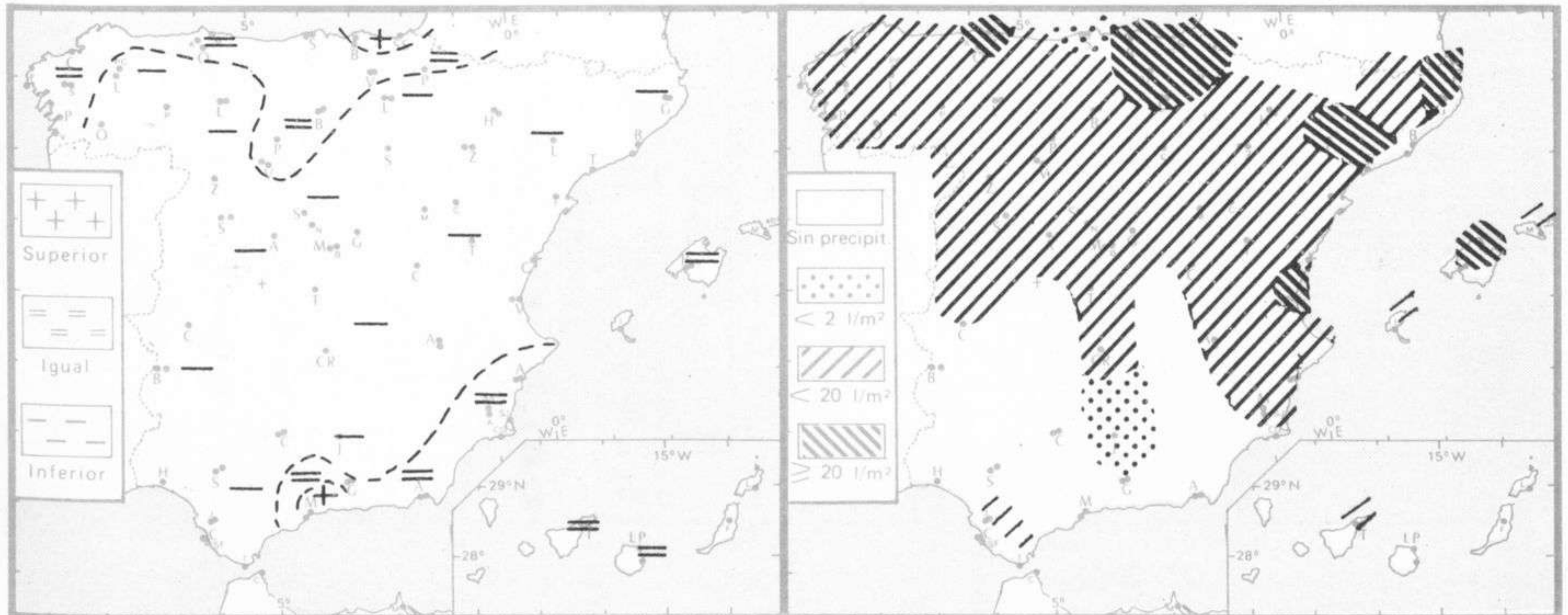
TENDENCIA PARA LOS DIAS

Día 27: Poco nuboso en el litoral cantábrico, Alguna nubosidad variable en el litoral mediterráneo, con Levante en el Estrecho. En el interior escasa nubosidad de evolución diurna.

Día 28: Continuará con tiempo generalmente soleado.

NIVEL TERMICO RESPECTO AL NORMAL

AREAS CON PRECIPITACION (12 h. ayer a 12 h. hoy)

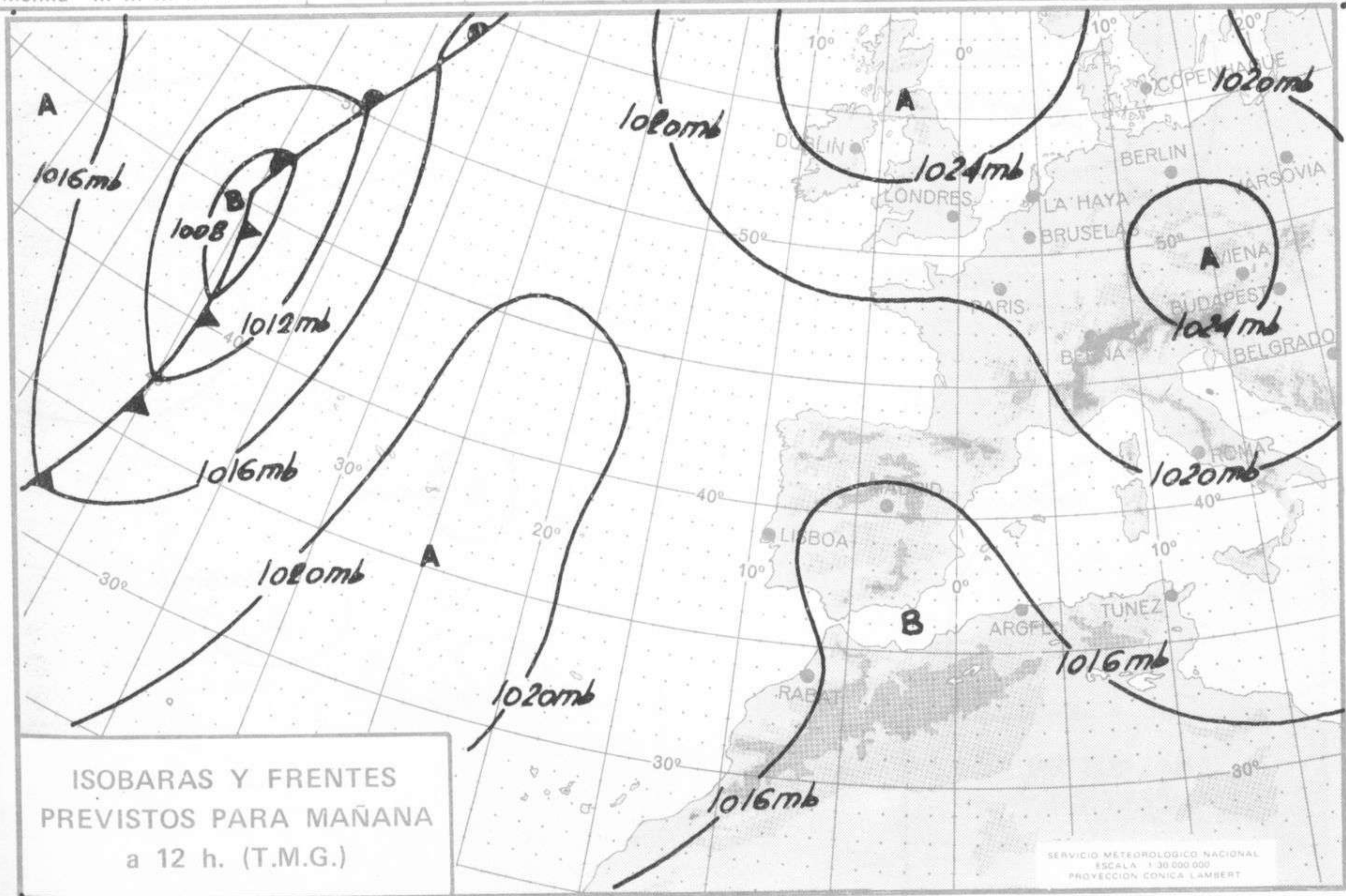


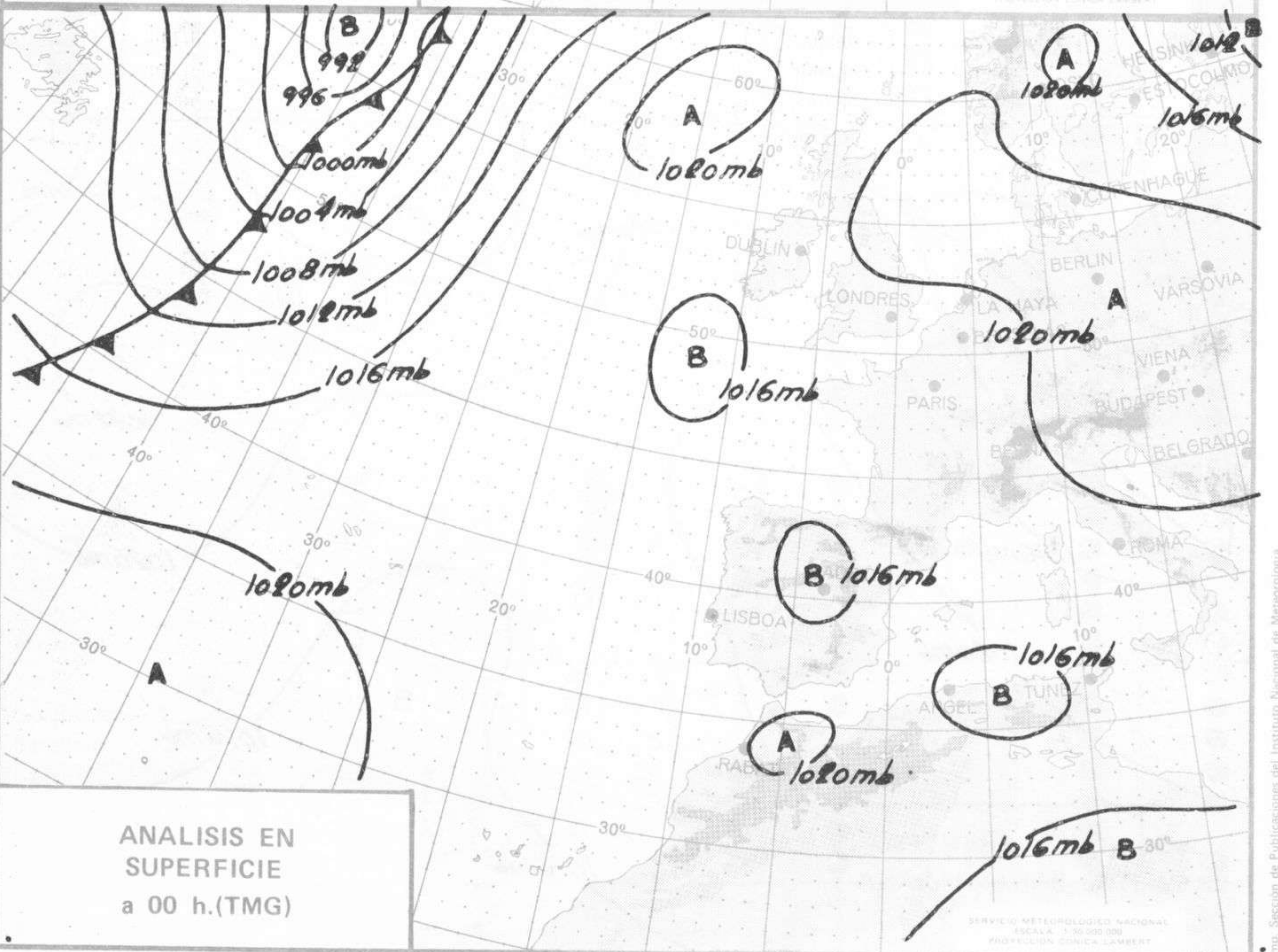
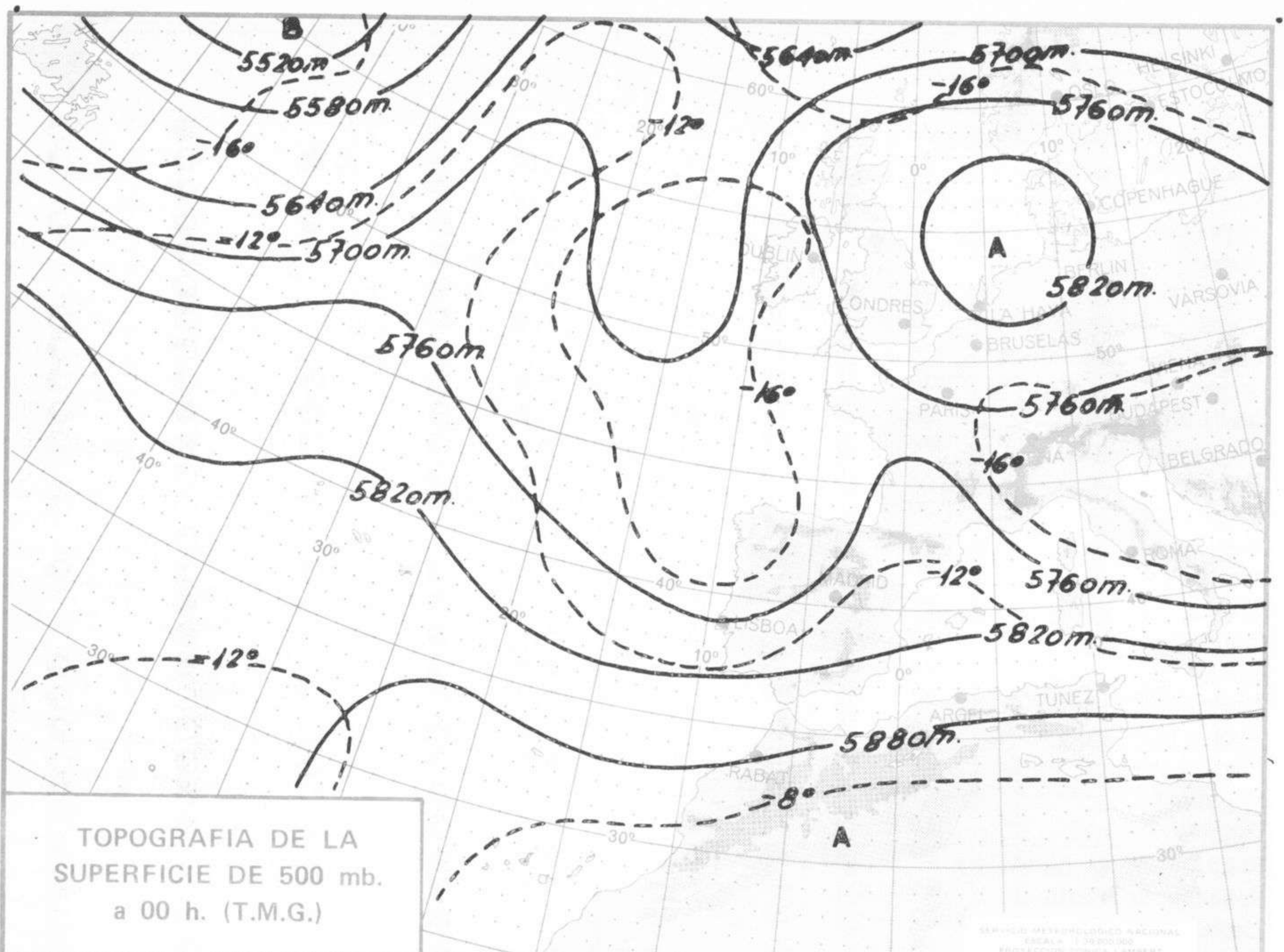
| Estaciones | Temperaturas (°C) | | | Precipitación (l/m ²) | | Horas de sol ayer | Meteoros significativos | | | |
|------------------------------|-------------------|---------------|-----------------|-----------------------------------|-----------|-------------------|-------------------------|-----------------|-----------------|-----------------|
| | Máxima de ayer | Mínima de hoy | 12 horas de hoy | 06 ayer a 06 hoy | Hoy 06-12 | | 18 horas de ayer | 00 horas de hoy | 06 horas de hoy | 12 horas de hoy |
| La Coruña | 21 | 16 | 20 | 4 | | 3.3 | ☁ | ☁ | ☁ | ☁ |
| Monteventoso | 21 | 15 | 17 | 13 | | | ☁ | ☁ | ☁ | ☁ |
| Lugo (Punto Centro) | 24 | | | X | | | ☁ | | | |
| Santiago de Compostela (A) | 21 | 14 | 18 | 5 | | 3.0 | ☁ | ☁ | ☁ | ☁ |
| Pontevedra | 23 | 17 | 22 | 1 | | 2.5 | ☁ | ☁ | ☁ | ☁ |
| Vigo (A) | 22 | 15 | 19 | 2 | | | ☁ | ☁ | ☁ | ☁ |
| Orense | 27 | 14 | 19 | 3 | | | ☁ | ☁ | ☁ | ☁ |
| Ponferrada | 25 | 15 | 21 | 3 | | | ☁ | ☁ | ☁ | ☁ |
| Asturias (A) | 22 | 15 | 17 | 4 | 4 | 11.1 | ☁ | | ☁ | ☁ |
| Gijón | 25 | 15 | | 3 | | 8.3 | ☁ | | ☁ | ☁ |
| Oviedo | | | | | | | | | | |
| Santander (A) | 23 | 15 | 16 | 24 | 11 | 10.5 | ☁ | ☁ | ☁ | ☁ |
| Santander | 23 | 18 | 18 | | 1 | 10.5 | ☁ | ☁ | ☁ | ☁ |
| Bilbao (A) | 26 | 17 | 20 | 2 | 20 | 7.3 | ☁ | ☁ | ☁ | ☁ |
| San Sebastian/Igueldo | 24 | 17 | 17 | ip | 2 | 2.6 | ☁ | ☁ | ☁ | ☁ |
| San Sebastian (A) | 26 | 18 | 21 | 2 | | 4.0 | ☁ | ☁ | ☁ | ☁ |
| León (A) | 24 | 13 | 16 | 4 | 5 | 10.0 | ☁ | ☁ | ☁ | ☁ |
| Zamora | 23 | 14 | 21 | 4 | | 3.5 | ☁ | ☁ | ☁ | ☁ |
| Palencia | | | | | | | | | | |
| Burgos (A) | 23 | 13 | 16 | 13 | 1 | 3.8 | ☁ | ☁ | ☁ | ☁ |
| Burgos | 23 | 14 | 16 | 17 | 1 | 5.0 | ☁ | ☁ | ☁ | ☁ |
| Valladolid (A) | 22 | 11 | 18 | 15 | | 4.6 | ☁ | ☁ | ☁ | ☁ |
| Valladolid | 25 | 13 | 18 | 9 | | 5.8 | ☁ | ☁ | ☁ | ☁ |
| Soria | 20 | 11 | 18 | 7 | | 2.6 | ☁ | ☁ | ☁ | ☁ |
| Salamanca (A) | 20 | 10 | 18 | 15 | | 3.5 | ☁ | ☁ | ☁ | ☁ |
| Avila | 19 | 9 | 17 | 3 | | 3.5 | ☁ | ☁ | ☁ | ☁ |
| Segovia | 21 | 16 | 18 | 6 | | 4.3 | ☁ | ☁ | ☁ | ☁ |
| Navacerrada | 13 | 7 | 13 | 12 | | X | ☁ | ☁ | ☁ | ☁ |
| Madrid/Barajas | 23 | 14 | 23 | 7 | | 3.9 | ☁ | ☁ | ☁ | ☁ |
| Madrid (Cdad. Universitaria) | 23 | 12 | 23 | 12 | | 4.0 | ☁ | ☁ | ☁ | ☁ |
| Guadalajara | 22 | 13 | 22 | 4 | | | ☁ | ☁ | ☁ | ☁ |
| Toledo | 23 | 16 | 22 | 14 | | 3.6 | ☁ | ☁ | ☁ | ☁ |
| Cuenca | 23 | 15 | | 1 | | 3.2 | ☁ | ☁ | ☁ | ☁ |
| Molina de Aragón | 22 | 12 | 17 | 2 | | 3.8 | ☁ | ☁ | ☁ | ☁ |
| Ciudad Real | 27 | 14 | 25 | 5 | | 6.3 | ☁ | ☁ | ☁ | ☁ |
| Albacete (A) | 25 | 14 | 24 | ip | | 5.5 | ☁ | ☁ | ☁ | ☁ |
| Cáceres | 24 | 15 | 23 | 4 | | | ☁ | ☁ | ☁ | ☁ |
| Badajoz (A) | 29 | 16 | 24 | 12 | | 7.3 | ☁ | ☁ | ☁ | ☁ |
| Vitoria (A) | 23 | 16 | 16 | 6 | 18 | | ☁ | ☁ | ☁ | ☁ |
| Logroño | 24 | 15 | 20 | 16 | 15 | 3.7 | ☁ | ☁ | ☁ | ☁ |
| Logroño (A) | 24 | 16 | 20 | 11 | 12 | 5.7 | ☁ | ☁ | ☁ | ☁ |
| Pamplona | | | | | | | | | | |
| Huesca (A) | 24 | 15 | 19 | 2 | 13 | 1.3 | ☁ | ☁ | ☁ | ☁ |
| Daroca | 22 | 16 | 21 | 3 | | 3.2 | ☁ | ☁ | ☁ | ☁ |
| Zaragoza (A) | 24 | 17 | 23 | 5 | 4 | 0.0 | ☁ | ☁ | ☁ | ☁ |
| Zaragoza | 23 | 18 | 24 | 1 | 3 | | ☁ | ☁ | ☁ | ☁ |
| Calamocha | 22 | 12 | 21 | 14 | | 3.6 | ☁ | ☁ | ☁ | ☁ |
| Teruel | 19 | 13 | 25 | 7 | | | ☁ | ☁ | ☁ | ☁ |
| Lérida | 26 | 16 | 21 | 16 | 5 | 3.0 | ☁ | ☁ | ☁ | ☁ |
| Gerona (A) | 26 | 17 | 21 | 24 | | | ☁ | ☁ | ☁ | ☁ |
| Barcelona | | 18 | 19 | ip | 5 | | | | | |
| Barcelona (A) | 24 | 17 | 22 | 5 | 14 | 3.4 | ☁ | ☁ | ☁ | ☁ |
| Reus (A) | 29 | 17 | 22 | 90 | 13 | 0.1 | ☁ | ☁ | ☁ | ☁ |
| Tarragona | 21 | 17 | | 44 | | 0.0 | ☁ | ☁ | ☁ | ☁ |
| Tortosa | 23 | 18 | 23 | 2 | 1 | 1.0 | ☁ | ☁ | ☁ | ☁ |

SÍMBOLOS UTILIZADOS EN LOS CUADROS DE METEOROS SIGNIFICATIVOS

- ☁ Llovizna
- ☁ Nebolina
- ☁ Relámpagos
- ▲ Granizo
- Despejado
- ☁ Nuboso
- ☁ NW 30 nudos
- ☁ NE 35 nudos
- ☁ Lluvia
- ☁ Niebla
- ☁ Tormenta
- * Nieve
- ☁ Poco nuboso
- ☁ Cubierto
- ☁ SW 50 nudos
- ☁ SE 65 nudos

| Estaciones | Temperaturas (°C) | | | Precipitación (l/m ²) | | Horas de sol ayer | Meteoros significativos | | | |
|-------------------------------|-------------------|---------------|-----------------|-----------------------------------|-----------|-------------------|-------------------------|-----------------|-----------------|-----------------|
| | Máxima de ayer | Mínima de hoy | 12 horas de hoy | 06 ayer a 06 hoy | Hoy 06-12 | | 18 horas de ayer | 00 horas de hoy | 06 horas de hoy | 12 horas de hoy |
| Castellón de la Plana | 22 | 18 | 21 | 48 | | 1.5 | ☉ | | ☉ | ☉ |
| Valencia (A) | 25 | 19 | 28 | 24 | | 1.0 | ☉ | R ☉ | ☉ | ☉ |
| Valencia | 25 | 20 | | 20 | | 1.5 | ☉ | | ☉ | |
| Alicante (A) | 29 | 20 | 28 | 2 | | 8.3 | ☉ | ☉ | ☉ | ☉ |
| Alicante | 29 | 19 | | 11 | | 8.3 | ☉ | | ☉ | |
| Murcia (A) | 32 | 20 | | 3 | | 8.3 | R ☉ | | ☉ | |
| Murcia | 31 | 21 | 30 | 1 | | 7.2 | ☉ | | ☉ | ☉ |
| Cartagena | 26 | 19 | 29 | | | | ☉ | | ☉ | ☉ |
| San Javier | 30 | 21 | 27 | | | 5.0 | ☉ | ☉ | ☉ | ☉ |
| Sevilla (A) | 28 | 19 | 27 | 1 | | 8.2 | ☉ | ☉ | ☉ | ☉ |
| Córdoba (A) | 28 | 19 | 27 | | | 7.5 | ☉ | ☉ | ☉ | ☉ |
| Jaén | 29 | 16 | | ip | | 7.9 | ☉ | | ☉ | ☉ |
| Granada (A) | 30 | 12 | 24 | ip | | 7.5 | ☉ | ☉ | ☉ | ☉ |
| Huelva | | | 20 | | | 8.0 | | | ☉ | ☉ |
| Jerez de la Frontera (A) ... | 27 | 18 | 26 | 1 | | | ☉ | ☉ | ☉ | ☉ |
| Cádiz | 27 | 21 | | 5 | | | ☉ | | ☉ | |
| San Fernando | 26 | 20 | | 3 | | 5.8 | ☉ | | ☉ | |
| Tarifa | 24 | 20 | 22 | ip | | 9.0 | ☉ | | ☉ | ☉ |
| Málaga (A) | 32 | 21 | 28 | | | 10.4 | ☉ | ☉ | ☉ | ☉ |
| Almería (A) | 29 | 21 | 26 | | | 12.2 | ☉ | ☉ | ☉ | ☉ |
| Palma de Mallorca (A) | 29 | 18 | 27 | 12 | | 6.5 | ☉ | ☉ | ☉ | ☉ |
| Mahón (A) | 27 | X | 26 | 4 | | 5.0 | ☉ | ☉ | ☉ | ☉ |
| Ibiza (A) | 28 | 20 | 27 | 4 | | 6.0 | ☉ | ☉ | ☉ | ☉ |
| Santa Cruz de Tenerife (A)... | 22 | 18 | 24 | 2 | | 3.0 | ☉ | ☉ | ☉ | ☉ |
| Santa Cruz de Tenerife | 25 | 22 | 27 | 6 | | 3.8 | ☉ | ☉ | ☉ | ☉ |
| Las Palmas (A) | 27 | 22 | 27 | | | 3.7 | ☉ | ☉ | ☉ | ☉ |
| Fuerteventura (A) | 27 | 22 | 26 | | | 6.5 | ☉ | | ☉ | ☉ |
| Lanzarote (A) | 30 | 22 | 29 | | | 9.7 | ☉ | | ☉ | ☉ |
| Ceuta | 25 | | 19 | | | | ☉ | | ☉ | ☉ |
| Melilla | 29 | 22 | 26 | | | 11.4 | ☉ | ☉ | ☉ | ☉ |





MADRID, Miércoles 25 de AGOSTO de 1976

INFORMACION SINOPTICA DE ESPAÑA

Table with multiple columns of numerical data representing meteorological information for various locations in Spain. The data is organized in a grid-like format with rows and columns of numbers.

| | | | | | | | | |
|--------|-------|-------|-------|-------|-------|-------|-------|-------|
| 250000 | 08482 | 03010 | 70001 | 16525 | 00900 | 15216 | 70000 | = |
| 250600 | 08482 | 03018 | 80000 | 16121 | 00900 | 15400 | 70021 | 94104 |
| 251200 | 08482 | 41816 | 80021 | 16928 | 38550 | 17701 | 70000 | = |
| 251800 | 08482 | 53210 | 80021 | 15130 | 48550 | 16707 | 70033 | = |
| 250000 | 08487 | 00804 | 75001 | 14723 | 00900 | 21113 | 70000 | = |
| 250600 | 08487 | 10504 | 75030 | 14922 | 10930 | 19301 | 70021 | 94122 |
| 251200 | 08487 | 52410 | 75031 | 16126 | 12532 | 21201 | 70000 | = |
| 251800 | 08487 | 22316 | 75021 | 13926 | 12502 | 21815 | 70028 | = |
| 251200 | 60010 | 63012 | 80022 | 21015 | 60940 | 08316 | 67749 | 70000 |
| 251800 | 60010 | 82812 | 82035 | 21512 | 80940 | 02602 | 67747 | 79718 |
| 250000 | 60015 | 00000 | 70001 | 19319 | 00900 | 12107 | 69496 | 70000 |
| 250600 | 60015 | 00000 | 70000 | 18418 | 00900 | 12400 | 69485 | 70118 |
| 251200 | 60015 | 81208 | 57032 | 19224 | 25170 | 18205 | 69507 | 70000 |
| 251800 | 60015 | 73606 | 60022 | 18923 | 15340 | 19307 | 69501 | 70026 |
| 250000 | 60020 | 00000 | 80021 | 19723 | 00900 | 18113 | 70000 | 91818 |
| 250600 | 60020 | 02702 | 80020 | 18922 | 00900 | 13603 | 70322 | 94038 |
| 251200 | 60020 | 70408 | 80022 | 20527 | 35540 | 21207 | 70000 | 91818 |
| 251800 | 60020 | 80906 | 80032 | 20225 | 25540 | 22602 | 70027 | 91818 |

| | | | | | | | | |
|--------|-------|-------|-------|-------|-------|-------|-------|-------|
| 250000 | 60030 | 43610 | 80021 | 20224 | 00920 | 21404 | 70000 | 91808 |
| 250600 | 60030 | 13610 | 80030 | 19123 | 18500 | 20302 | 70022 | 94037 |
| 251200 | 60030 | 10212 | 75011 | 21127 | 11500 | 21110 | 70000 | 91818 |
| 251800 | 60030 | 70216 | 80022 | 19426 | 00920 | 21509 | 70028 | 91818 |
| 250600 | 60035 | 20204 | 60012 | 18123 | 28500 | 20803 | 70022 | 94065 |
| 251200 | 60035 | 20712 | 75021 | 20026 | 28500 | 20308 | = | = |
| 251800 | 60035 | 00410 | 75000 | 19226 | 00900 | 20802 | 70027 | = |
| 250600 | 60040 | 10408 | 65000 | 18423 | 15500 | 18710 | 70022 | 94097 |
| 251200 | 60040 | 01020 | 65000 | 19429 | 00900 | 18001 | 70000 | = |
| 251800 | 60040 | 10412 | 65000 | 19427 | 10910 | 18202 | 70030 | = |
| 251800 | 60320 | 22720 | 80021 | 15521 | 28500 | 14700 | 70025 | 81625 |
| 250000 | 60338 | 02612 | 75020 | 16524 | 00900 | 17204 | 70000 | = |
| 250600 | 60338 | 62606 | 75031 | 16622 | 11454 | 18303 | 70022 | 81816 |
| 251200 | 60338 | 63114 | 84012 | 17826 | 28470 | 18002 | 70000 | 81825 |

RADIOSONDEOS

| | | | | | | | | |
|-------|-------|-------|-------|-------|-------|-------|-------|-------|
| TTAA | 74231 | 08001 | 99009 | 16803 | 00000 | 00152 | 16406 | 03502 |
| 85521 | 08833 | 12003 | 70101 | 00759 | 02503 | 50571 | 16523 | 16015 |
| 40736 | 27533 | 14021 | 30936 | 45145 | 14028 | 25055 | 56355 | 15530 |
| 20196 | 54563 | 25513 | 15380 | 54100 | 24515 | = | = | = |
| TTBB | 74230 | 08001 | 00009 | 16803 | 11879 | 15611 | 22856 | 15458 |
| 33907 | 11814 | 44873 | 10414 | 55852 | 08834 | 66777 | 04409 | 77719 |
| 00708 | 88691 | 00765 | 99643 | 06157 | 11606 | 07112 | 22513 | 15322 |
| 33437 | 22129 | 44237 | 59555 | 55205 | 54562 | 21212 | 00009 | 00000 |
| 11907 | 15003 | 22266 | 15032 | 33135 | 26514 | 44100 | 21505 | 41414 |
| 88888 | 51515 | 11907 | 15003 | 22800 | 16006 | 33600 | 11010 | = |
| TTDD | 74230 | 08001 | 11871 | 53300 | 21212 | 11960 | 23506 | = |
| TTAA | 74231 | 08221 | 99944 | 17827 | 00000 | 00130 | 88888 | 88888 |
| 85517 | 12024 | 23519 | 70115 | 02414 | 23016 | 50577 | 12132 | 22522 |
| 40743 | 26300 | 23533 | 30945 | 42900 | 24040 | 25065 | 51100 | 24548 |
| 20209 | 54700 | 27055 | 88261 | 50357 | 24550 | = | = | = |
| TTBB | 74230 | 08221 | 00944 | 17827 | 11747 | 05015 | 22632 | 01513 |
| 33509 | 11127 | 44414 | 24559 | 55261 | 50357 | 66154 | 58300 | 21212 |
| 00944 | 00000 | 11154 | 27055 | 41414 | 85500 | 51515 | 11840 | 23508 |
| 22800 | 23519 | 33600 | 22019 | = | = | = | = | = |
| TTAA | 75111 | 08001 | 99010 | 20840 | 00000 | 00161 | 17843 | 08505 |
| 85527 | 08457 | 33505 | 70106 | 01155 | 26508 | 50572 | 15957 | 17513 |
| 40736 | 38557 | 15013 | 30935 | 45357 | 13018 | 25054 | 55357 | 13513 |
| 20197 | 51764 | 24513 | 15383 | 52565 | 25017 | = | = | = |

| | | | | | | | | |
|-------|-------|-------|-------|-------|-------|-------|-------|-------|
| TTBB | 75110 | 08001 | 00010 | 20840 | 11934 | 12433 | 22876 | 10429 |
| 33854 | 08657 | 44613 | 07540 | 55483 | 17557 | 66255 | 54957 | 77234 |
| 56558 | 88204 | 51763 | 99135 | 52765 | 11121 | 54965 | 21212 | 00010 |
| 00000 | 11905 | 04502 | 22100 | 27005 | 41414 | 23420 | 51515 | 11905 |
| 04502 | 22800 | 31005 | 33600 | 21008 | = | = | = | = |
| TTCC | 75115 | 08001 | 70876 | 51769 | 09009 | 50094 | 51778 | 12012 |
| 88999 | 77999 | = | = | = | = | = | = | = |
| TTDD | 75110 | 08001 | 11944 | 51765 | 22434 | 51700 | 21212 | 11450 |
| 13507 | = | = | = | = | = | = | = | = |
| TTAA | 75111 | 08221 | 99944 | 19245 | 19005 | 00134 | 88888 | 88888 |
| 85526 | 12440 | 26011 | 70122 | 02400 | 25022 | 50575 | 14900 | 25524 |
| 40740 | 27000 | 25522 | 30940 | 45100 | 24525 | 25000 | 48300 | 25030 |
| 20207 | 49700 | 25043 | 15393 | 52500 | 25563 | = | = | = |
| TTBB | 75110 | 08221 | 00944 | 19245 | 11731 | 03030 | 22712 | 03458 |
| 33458 | 19100 | 44282 | 48500 | 55226 | 48100 | 66158 | 52500 | 77140 |
| 52500 | 21212 | 00944 | 19005 | 11140 | 25563 | 41414 | 22504 | 51515 |
| 11840 | 26011 | 22800 | 25016 | 33600 | 25522 | = | = | = |
| TTAA | 75110 | 60020 | 99018 | 26450 | 10000 | 00192 | 24644 | 85592 |
| 17258 | 70223 | 08659 | 50591 | 10330 | 40760 | 17700 | 30968 | 35900 |
| 25094 | 45300 | 20240 | 55300 | 15417 | 68300 | 10658 | 88888 | 88999 |
| 77999 | = | = | = | = | = | = | = | = |
| TTBB | 75110 | 60020 | 00018 | 26450 | 11923 | 16818 | 22903 | 20058 |
| 33610 | 04859 | 44457 | 15504 | 55392 | 18100 | 66310 | 34300 | 77155 |
| 67500 | 88117 | 74700 | 21212 | 00018 | 10008 | 41414 | 25542 | = |

TEMP (F - 35 E) : Parte de observación en altitud de presión, temperatura, humedad y viento de una estación terrestre

| | | | | | | | | | | | |
|------------------------------|---|--|---|--|--|---|---|---|---|--|---|
| Niveles inferiores a 100 mb. | Niveles tipo: superficie, 1.000, 850, 700, 500, 400, 300, 250, 200, 150 y 100 mb. | TTAA | YYGGI _d | lllll | 99P ₀ P ₀ P ₀ | T ₀ T ₀ T ₀ D ₀ D ₀ D ₀ | d ₀ d ₀ f ₀ f ₀ f ₀ | P ₁ P ₁ h ₁ h ₁ h ₁ | T ₁ T ₁ T ₁ D ₁ D ₁ D ₁ | d ₁ d ₁ f ₁ f ₁ f ₁ | |
| | Tropopausa y vientos máximos | 88P ₁ P ₁ P ₁ | T ₁ T ₁ T ₁ D ₁ D ₁ D ₁ | d ₁ d ₁ f ₁ f ₁ f ₁ | 77P ₁ P ₁ P ₁ | d ₁ d ₁ m ₁ m ₁ m ₁ m ₁ | (4v ₁ v ₁ v ₁ v ₁) | | | | |
| | Puntos notables y nubes | TTBB | YYGGI _d | lllll | n ₀ n ₀ P ₀ P ₀ P ₀ | T ₀ T ₀ T ₀ D ₀ D ₀ D ₀ | n ₁ n ₁ P ₁ P ₁ P ₁ | T ₁ T ₁ T ₁ D ₁ D ₁ D ₁ | | n _n n _n P _n P _n P _n | T _n T _n T _n D _n D _n D _n |
| | Niveles superiores a 100 mb. | Niveles tipo: 70, 50, 30, 20 y 10 mb. | TTCC | YYGGI _d | lllll | P ₁ P ₁ h ₁ h ₁ h ₁ | T ₁ T ₁ T ₁ D ₁ D ₁ D ₁ | d ₁ d ₁ f ₁ f ₁ f ₁ | | P _n P _n h _n h _n h _n | T _n T _n T _n D _n D _n D _n |
| | Tropopausa y vientos máximos | 88P ₁ P ₁ P ₁ | T ₁ T ₁ T ₁ D ₁ D ₁ D ₁ | d ₁ d ₁ f ₁ f ₁ f ₁ | 77P ₁ P ₁ P ₁ | d ₁ d ₁ m ₁ m ₁ m ₁ m ₁ | (4v ₁ v ₁ v ₁ v ₁) | | | | |
| | Puntos notables | TTDD | YYGGI _d | lllll | n ₁ n ₁ P ₁ P ₁ P ₁ | T ₁ T ₁ T ₁ D ₁ D ₁ D ₁ | | n _n n _n P _n P _n P _n | T _n T _n T _n D _n D _n D _n | | |
| | | 21212 | n ₁ n ₁ P ₁ P ₁ P ₁ | d ₁ d ₁ f ₁ f ₁ f ₁ | | n _n n _n P _n P _n P _n | d _n d _n f _n f _n f _n | | | | |

SYNOP (F - 11 E) : Informe de una observación en superficie procedente de una estación terrestre

lllll Nddff VVwww PPPTT N_hC_LhC_MC_H T_dT_dj_jj_j (SP₀P₀P₀) (7RRjj) (8N₁Ch₁) (9SpSp₀P₀) (MONT N'C'H'C₁)