



MINISTERIO DEL AIRE

Boletín diario del Servicio Meteorológico Nacional

AÑO XVII

2.ª EPOCA

Núm. 70.

MADRID, DOMINGO 10 DE MARZO DE 1968

CENTRO DE ANALISIS Y PREDICCIÓN (Ciudad Universitaria) - APARTADO 285 - MADRID. - Teléf. 2 44 35 00

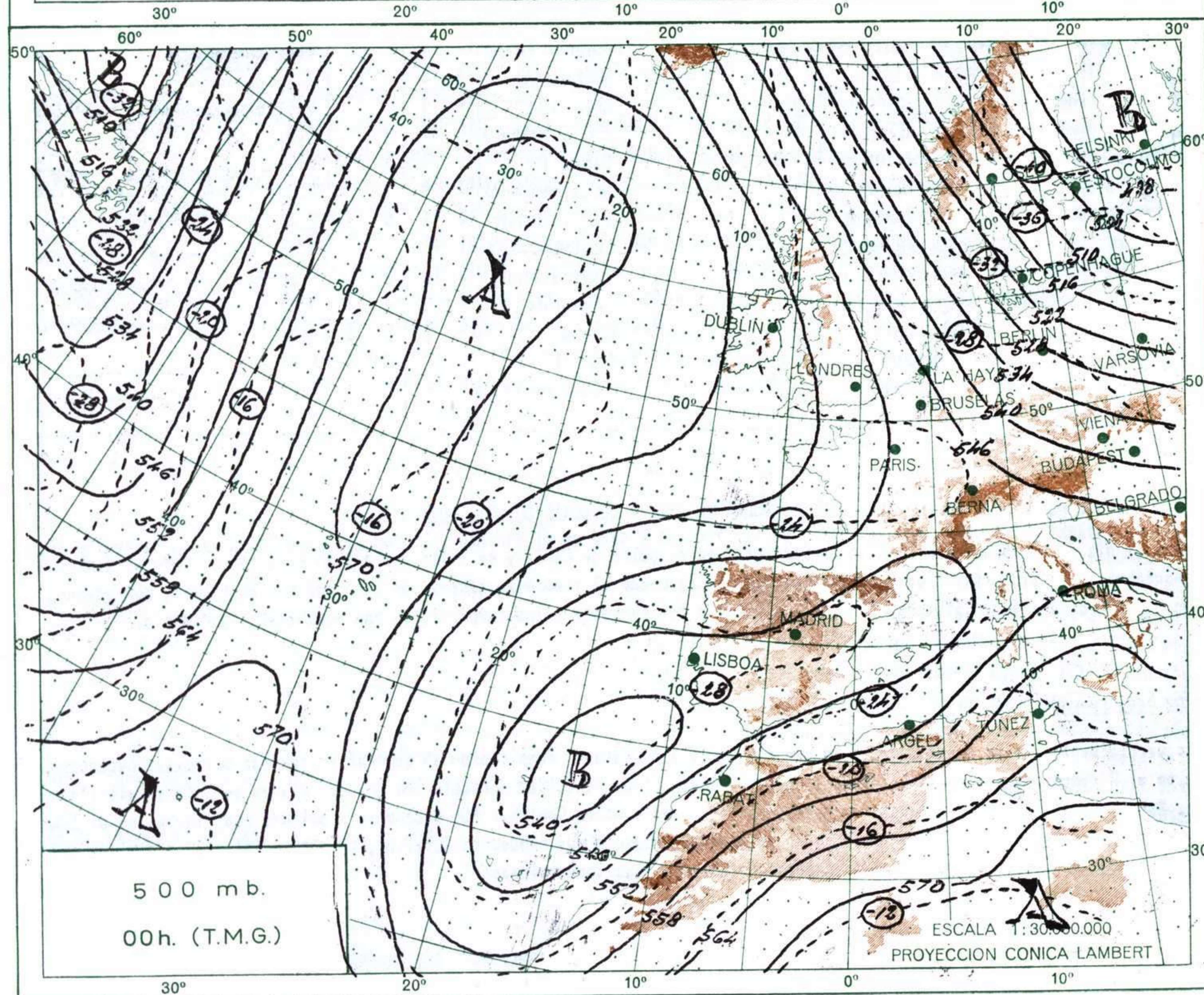
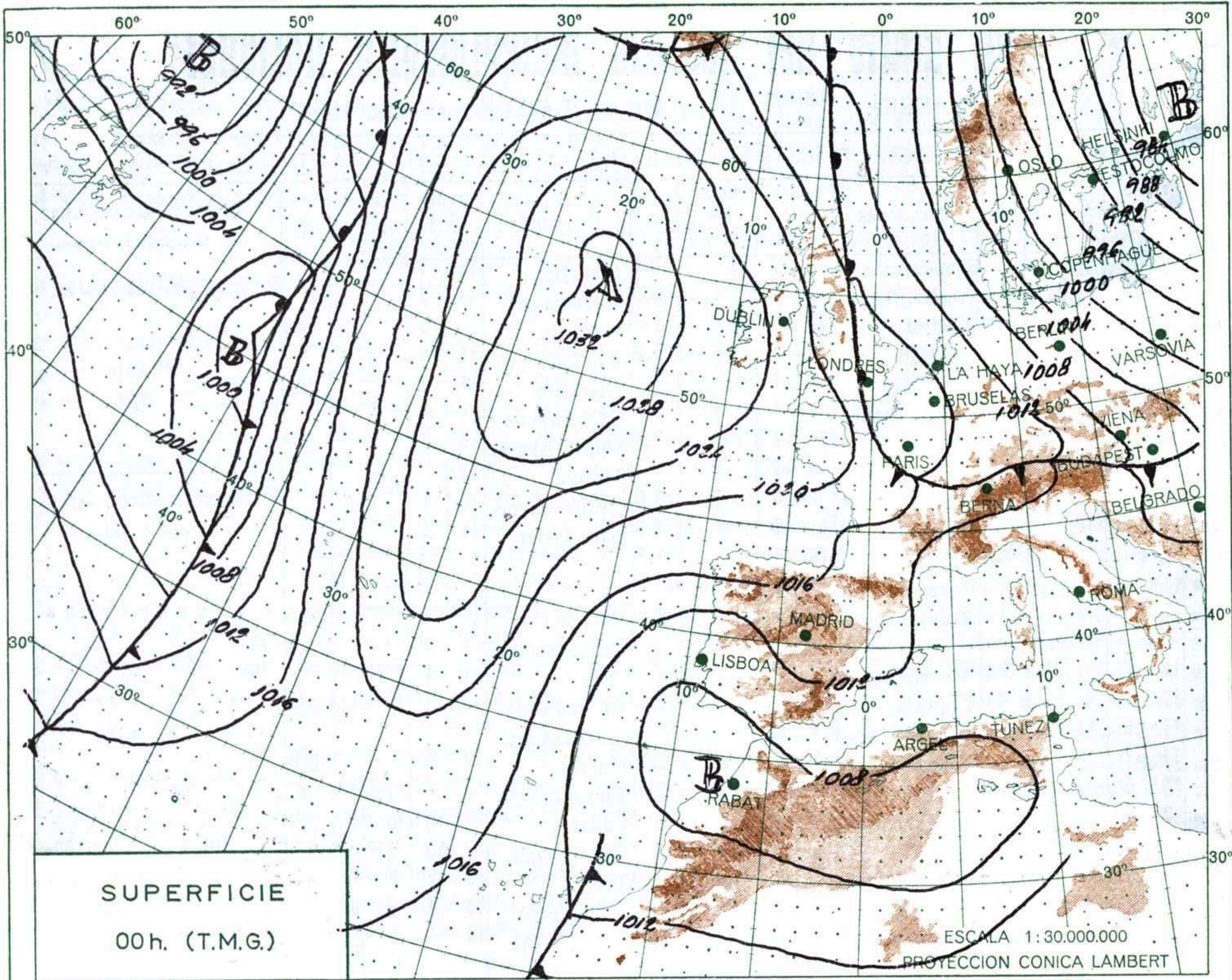
| ESTACIONES | TEMPERATURA | | PRECIPITACION | | Horas de sol | ESTACIONES | TEMPERATURA | | PRECIPITACION | | Horas de sol | ESTACIONES | TEMPERATURA | | PRECIPITACION | | Horas de sol | TEMPERATURAS EXTREMAS (De las capitales Peninsulares) |
|-------------------|-------------|------|---------------|-----|--------------|------------------|-------------|------|---------------|-----|--------------|------------------------|-------------|------|---------------|-----|--------------|---|
| | Máx. | Mín. | Noche | Día | | | Máx. | Mín. | Noche | Día | | | Máx. | Mín. | Noche | Día | | |
| La Coruña | 12 | 7 | | | 4.1 | Navacerrada (*) | -1 | -7 | ip | | 0.0 | Castellón | 14 | 5 | | | | MAXIMA: 19° en Huelva. MINIMA: 7° bajo cero en Cuenca. |
| Monteventoso | 10 | 5 | | | | Madrid/Barajas | 11 | 1 | | | 3.0 | Valencia (A) | 14 | 3 | | | X | |
| Bares | 9 | 6 | ip | | | Madrid | 11 | 2 | ip | | 3.4 | Valencia | | 5 | | | 9.3 | |
| Lugo (P.Centro) | 9 | 1 | | | | Madrid/C.Vientos | 10 | 1 | | | 6.0 | Alicante (A) | 15 | 4 | | | | |
| Finisterre | 12 | 6 | | | 7.9 | Getafe | 11 | 1 | | | | Alicante | 16 | 4 | | | 10.3 | |
| Santiago (A) | 11 | 2 | | | | Guadalajara | 9 | 1 | | | | C.º S. Antonio | 14 | 8 | | | | |
| Pontevedra | 16 | 7 | | | | Toledo | 10 | -1 | | | 7.4 | Murcia/Alcant. | 13 | 3 | | | 7.2 | |
| Vigo (A) | 15 | 2 | | | | Cuenca | 9 | -7 | | | | Murcia | 13 | | | | | |
| Vigo | 16 | 5 | | | 8.8 | Molina de Arag.º | | 0 | | | 0.0 | Castillo Galeras | 11 | 5 | ip | | | |
| Orense | | | | | | Ciudad Real | 11 | -5 | | | 7.9 | San Javier | 14 | 3 | | | | |
| Ponferrada | 15 | -1 | | | 5.0 | Albacete (A) | 10 | -5 | | | 7.5 | | | | | | | |
| | | | | | | Cáceres | 11 | 2 | | | | | | | | | | OBSERVACIONES DE MADRID (Parque del Retiro) TEMPERATURAS Máx. 10,6 a 15,00 h. Mín. 2,2 a 7,00 h. a 1 h. 3,1 a 13 h. 8,9 a 7 h. 2,2 a 18 h. 8,8 PRESIONES Máx. 701,7 mm. a 22,00ayer Mín. 700,1 mm. a 16,00hoy a 1 h. 701,2 a 13 h. 701,0 a 7 h. 701,2 a 18 h. 700,5 VIENTO Veloc. máx. 17 m/s. a 11,30 h. Dirección: Nordeste. Recorrido en 24 horas 313 km. |
| Asturias (A) | | | | | | Badajoz (A) | 15 | 2 | | | 9.5 | Sevilla (A) | 18 | 7 | | | 4.4 | |
| Gijón | 12 | 7 | | 1 | 2.3 | Vitoria (A) | 6 | | | | | Córdoba (A) | 18 | 4 | | | 0.0 | |
| Santander (A) | 11 | 6 | 5 | | | Logroño | 10 | 4 | | | 0.0 | Jaén | 14 | 2 | | | | |
| Santander | 11 | 6 | | ip | 0.1 | Logroño (A) | 9 | 3 | | | | Granada (A) | 10 | 5 | ip | | 8.0 | |
| Punta Galea | 11 | 7 | | | | Pamplona | 6 | 2 | | | 0.0 | Granada/Cart. | | | | | | |
| Bilbao (A) | 10 | 6 | | | 0.0 | Huesca/Monfl. | 14 | 2 | | | 0.0 | Huelva | 19 | 7 | | | 0.0 | |
| S. Sebastián/Ig.º | 7 | 5 | | | | Candanchú (*) | | -8 | | | | Jerez de la F.ª (A) | 13 | 8 | 2 | 4 | X | |
| S. Sebastián (A) | 9 | 4 | | | 1.8 | Veruela | 7 | 1 | | | | Cádiz | 13 | 10 | ip | 13 | 2.5 | |
| León (A) | 10 | -2 | | | 9.2 | Daroca | 7 | 1 | | | | San Fernando | 12 | 10 | 2 | 8 | 2.0 | |
| Zamora | 8 | 0 | | | | Zaragoza (A) | 11 | 4 | ip | | | Tarifa | 13 | X | X | 6 | 2.8 | |
| Palencia | 6 | 1 | | | 3.0 | Zaragoza | 10 | 4 | ip | | | Málaga (A) | 13 | 7 | 2 | 6 | 10.5 | |
| Burgos (A) | 4 | -1 | | | 0.7 | Calamocha | 5 | -1 | ip | | 0.0 | Almería (A) | 15 | | | | | |
| Burgos | 5 | 1 | | | 1.8 | Teruel | 3 | 1 | ip | | | | | | | | | |
| Valladolid (A) | 6 | 0 | | | 2.3 | | | | | | | Palma de M.ª (A) | 15 | 1 | | | 6.9 | |
| Valladolid | 7 | 0 | | | 0.9 | | | | | | | Mahón (A) | 13 | 5 | | | 2.5 | |
| Soria | 7 | -2 | ip | | 0.0 | Lérida | 13 | 5 | ip | | 0.0 | Ibiza (A) | 15 | 3 | | | 8.4 | |
| Salamanca (A) | 6 | -1 | | | 0.7 | Montseny (*) | | -3 | ip | | 0.0 | S.º C. de la Palma (A) | 16 | 17 | 4 | | 0.2 | |
| Avila | 3 | -3 | | | 4.9 | Gerona (A) | 16 | 4 | | | | Izaña (*) | | -4 | | | 0.0 | |
| Segovia | 5 | 1 | | | 0.4 | Cabo Bagur | | 5 | | | | S.º C. de Tenerife (A) | 13 | 9 | 1 | | 0.6 | |
| | | | | | | La Molina (*) | | -5 | 9 | | 0.0 | S.º C. de Tenerife | 18 | 14 | 6 | 1 | 2.1 | |
| | | | | | | Barcelona | | 7 | ip | | | Las Palmas (A) | 21 | 11 | | | 4.5 | |
| | | | | | | Barcelona (A) | 14 | 7 | ip | | 0.0 | Fuerteventura (A) | 16 | 10 | 3 | | 6.3 | |
| | | | | | | Reus (A) | 14 | 4 | | | 1.4 | Lanzarote (A) | X | 12 | 2 | 1 | 2.0 | |
| | | | | | | Tarragona | 13 | 6 | | | 1.4 | Ceuta | 10 | 6 | 15 | 2 | 4.5 | |
| | | | | | | Tortosa | 14 | 6 | | | | Melilla | 7 | 12 | ip | 4 | 6.6 | |
| | | | | | | | | | | | | V. Cisneros (A) | 21 | 16 | | | | |

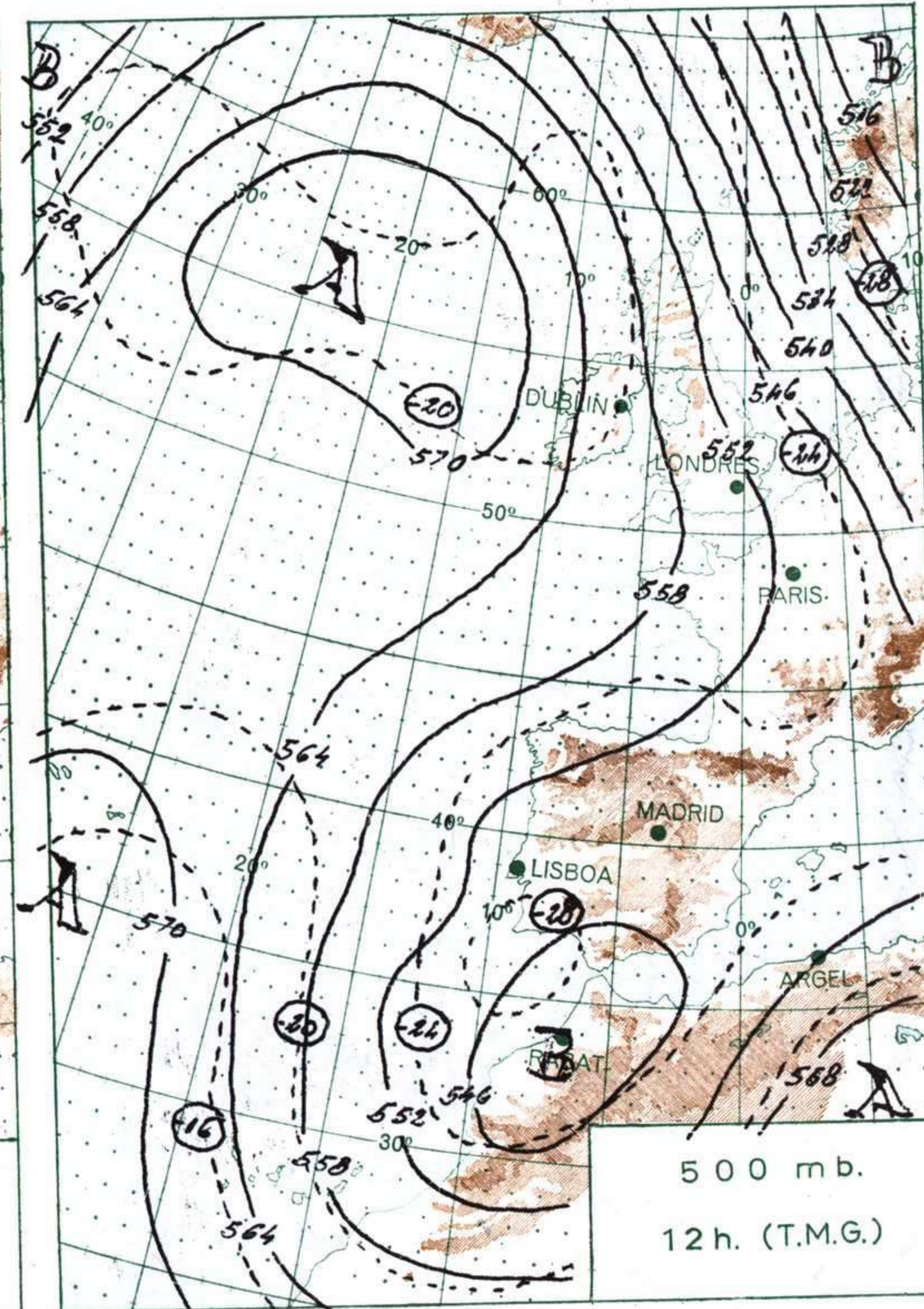
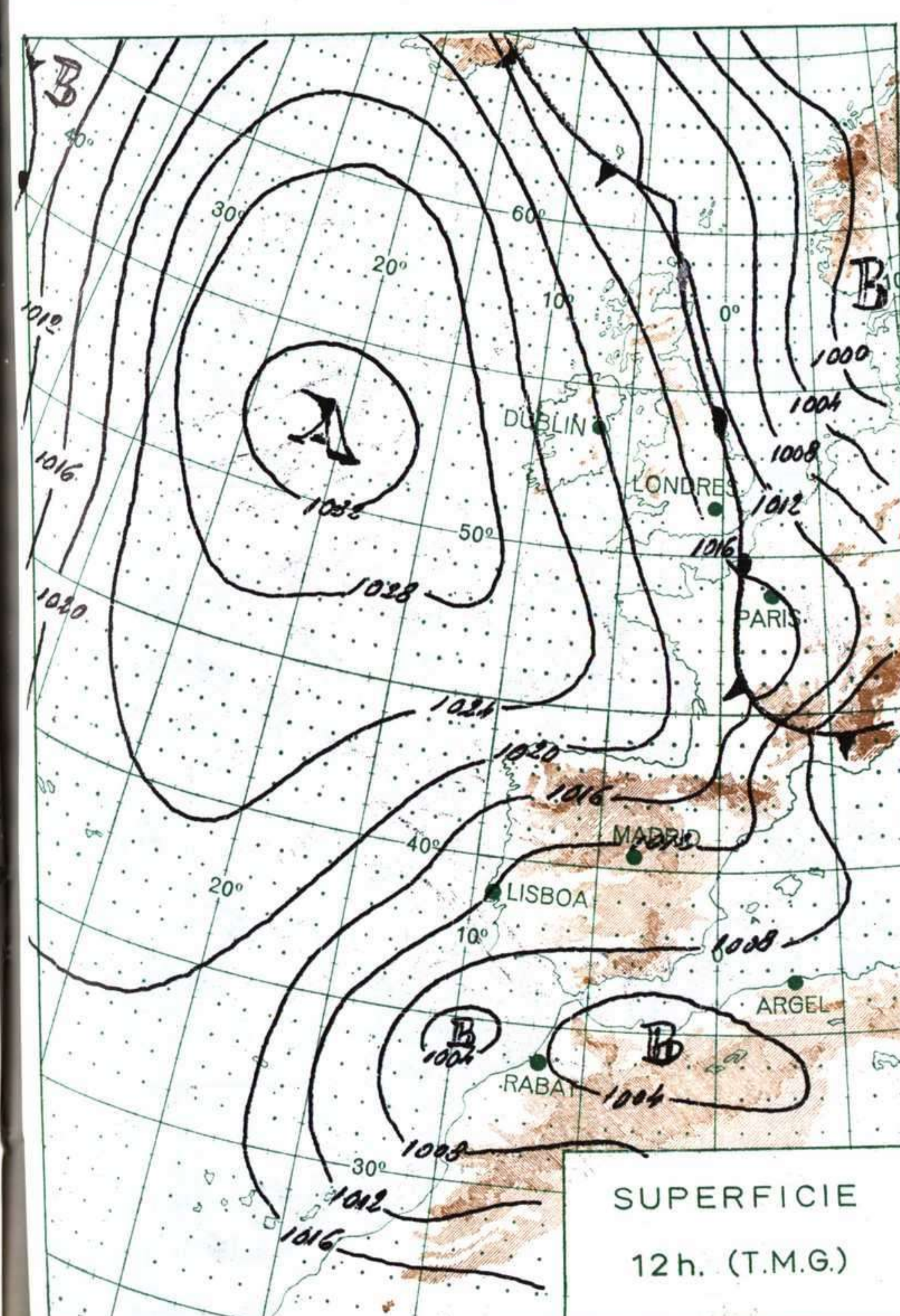
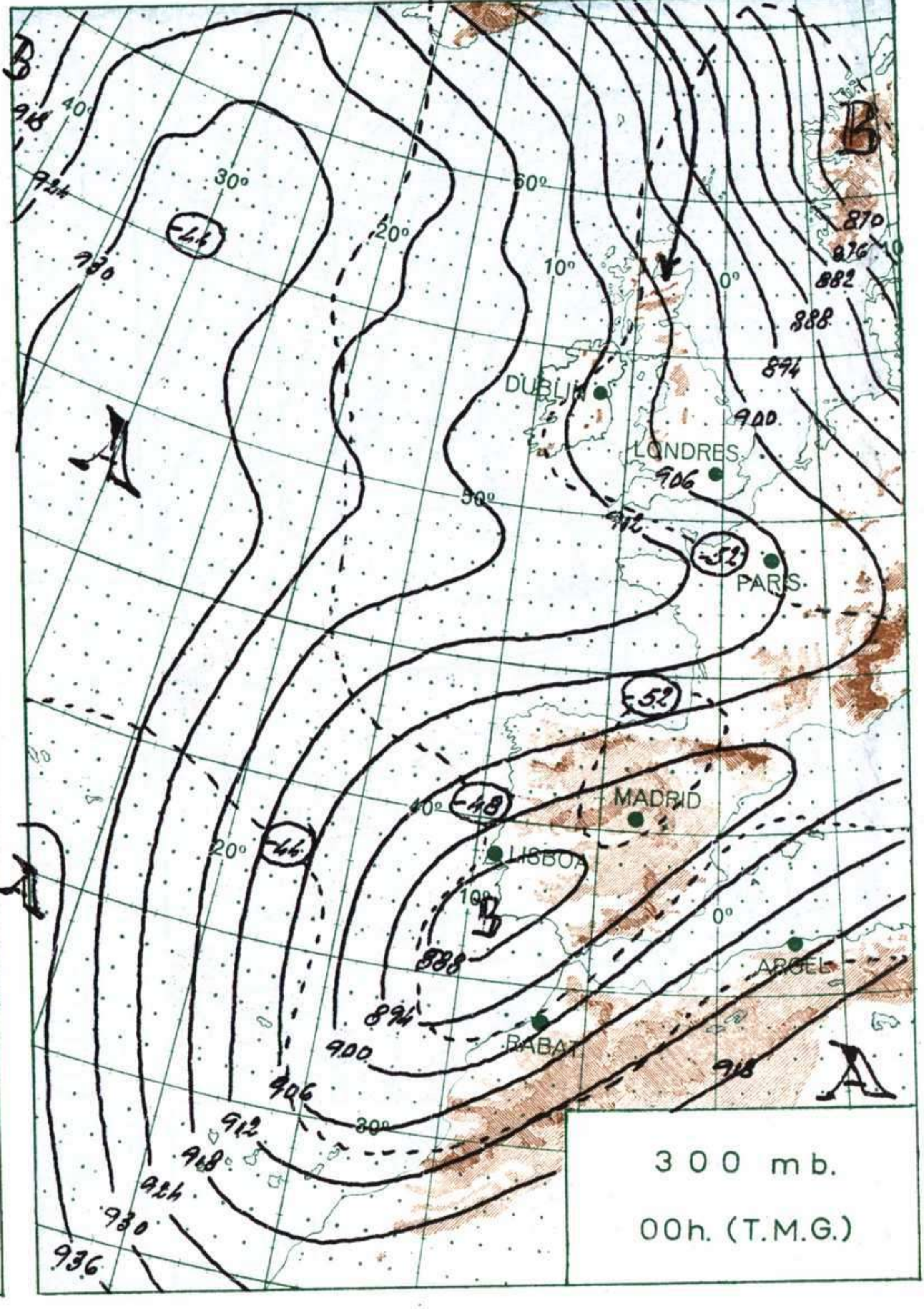
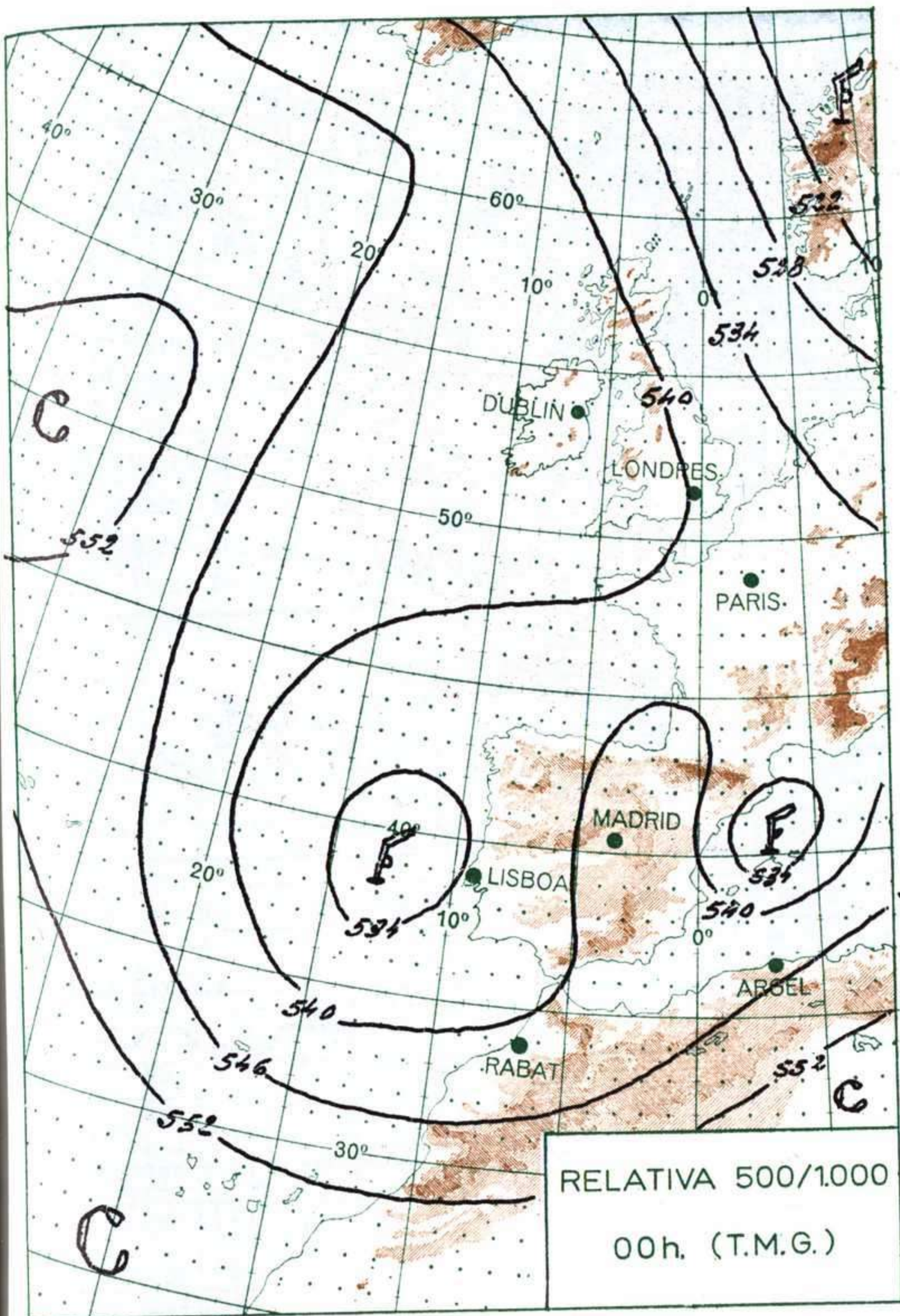
INFORMACION GENERAL DE LAS ULTIMAS 24 HORAS (DE 19 HORAS DE AYER A 19 HORAS DE HOY, HORA OFICIAL).

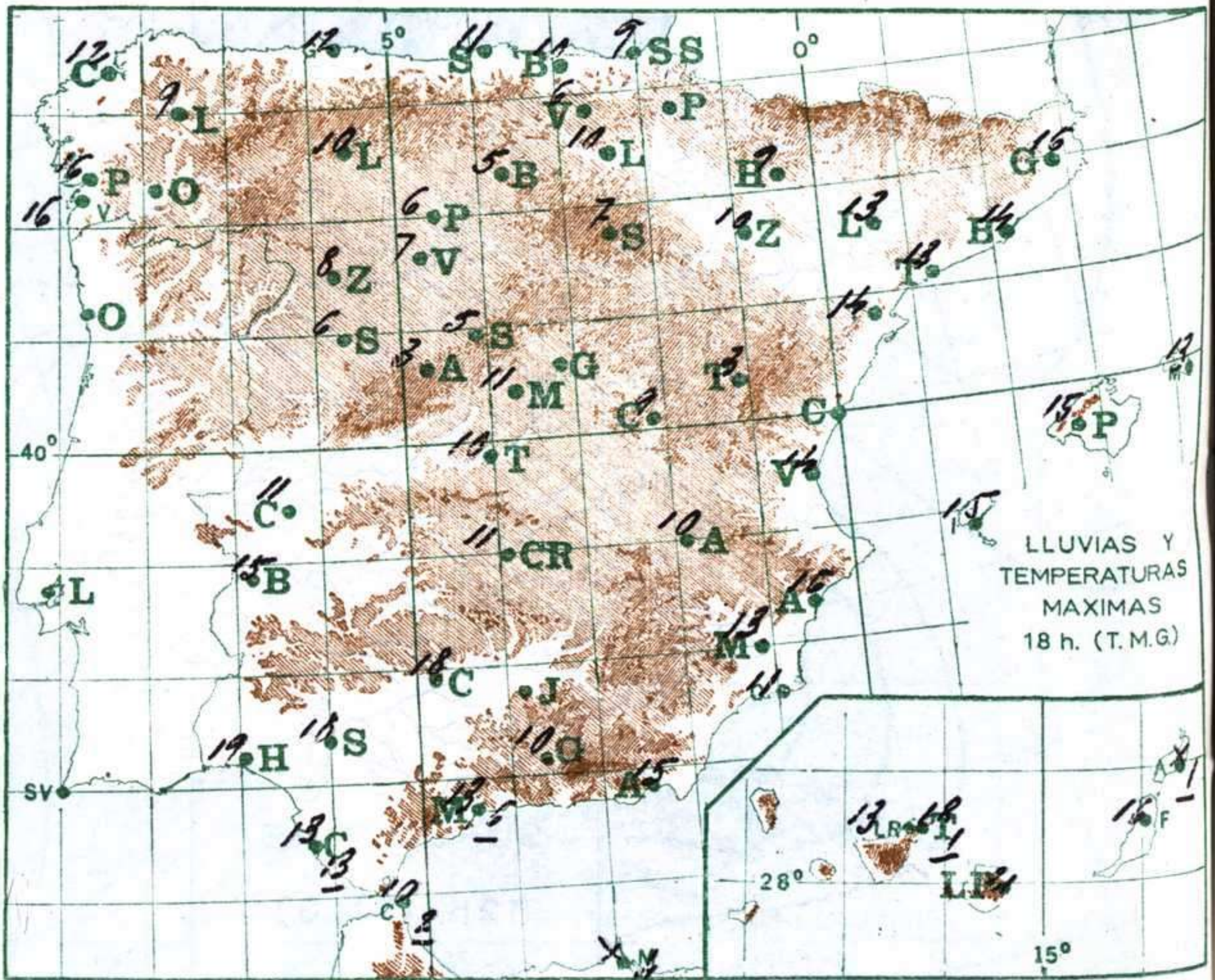
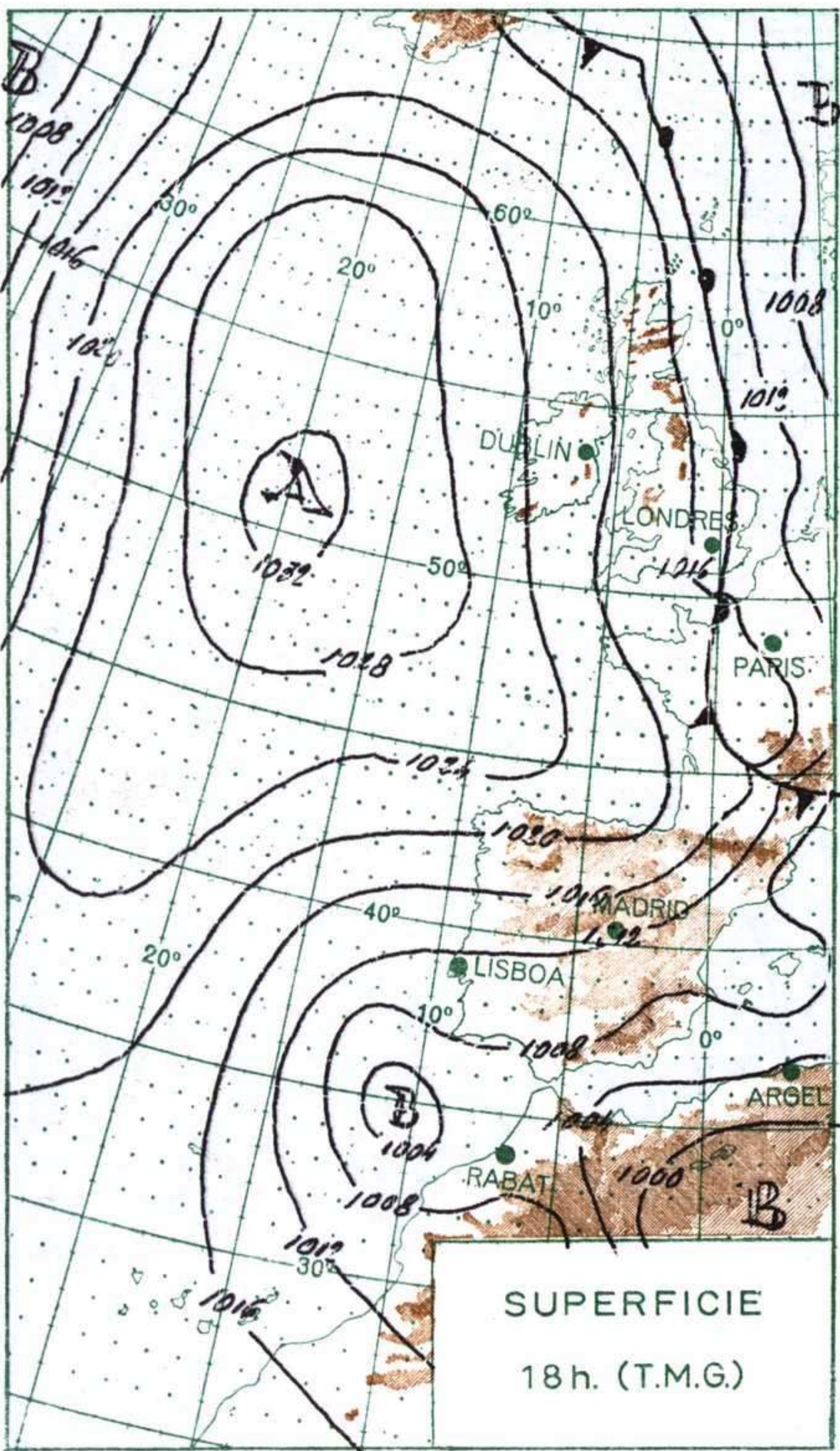
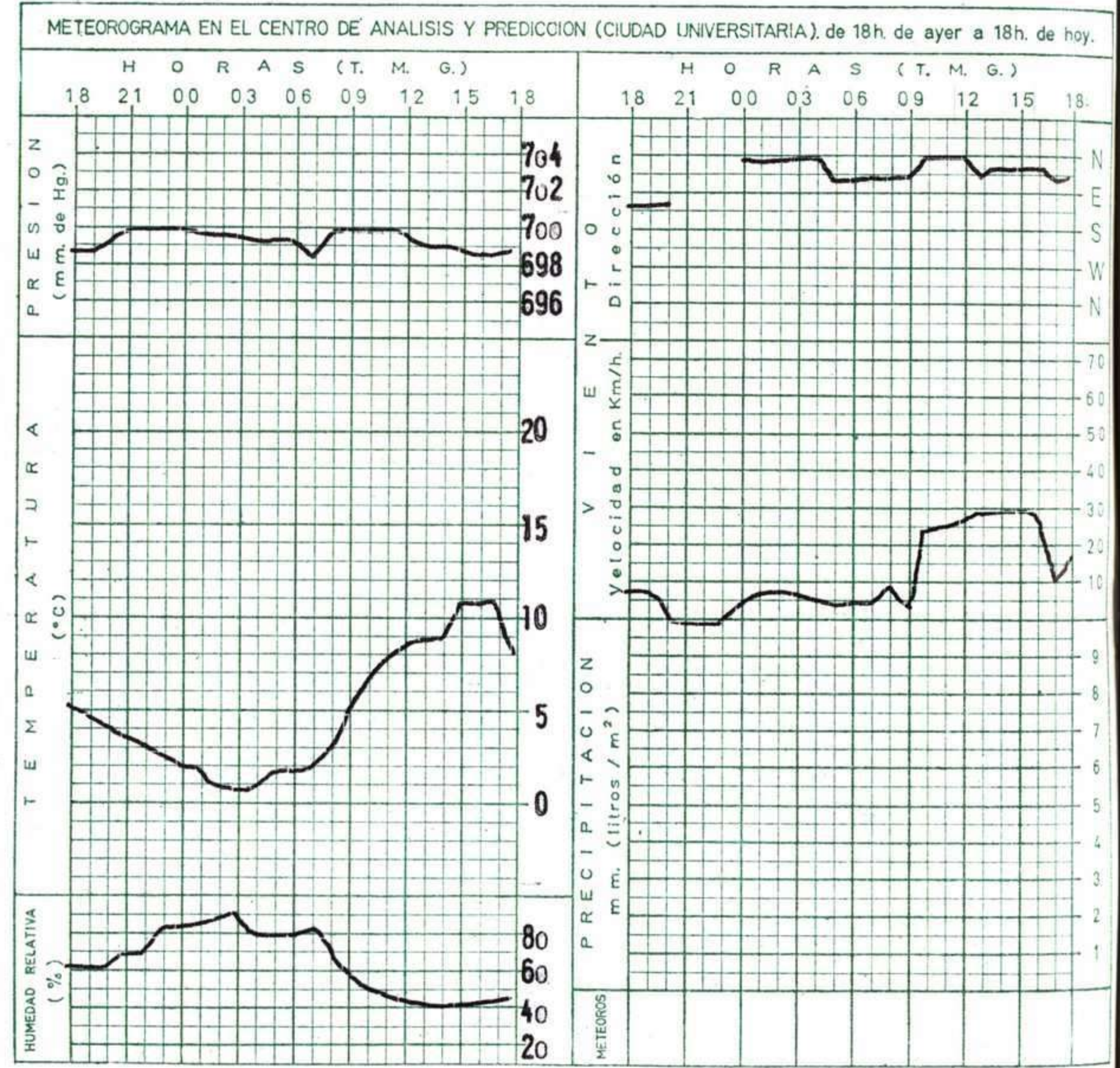
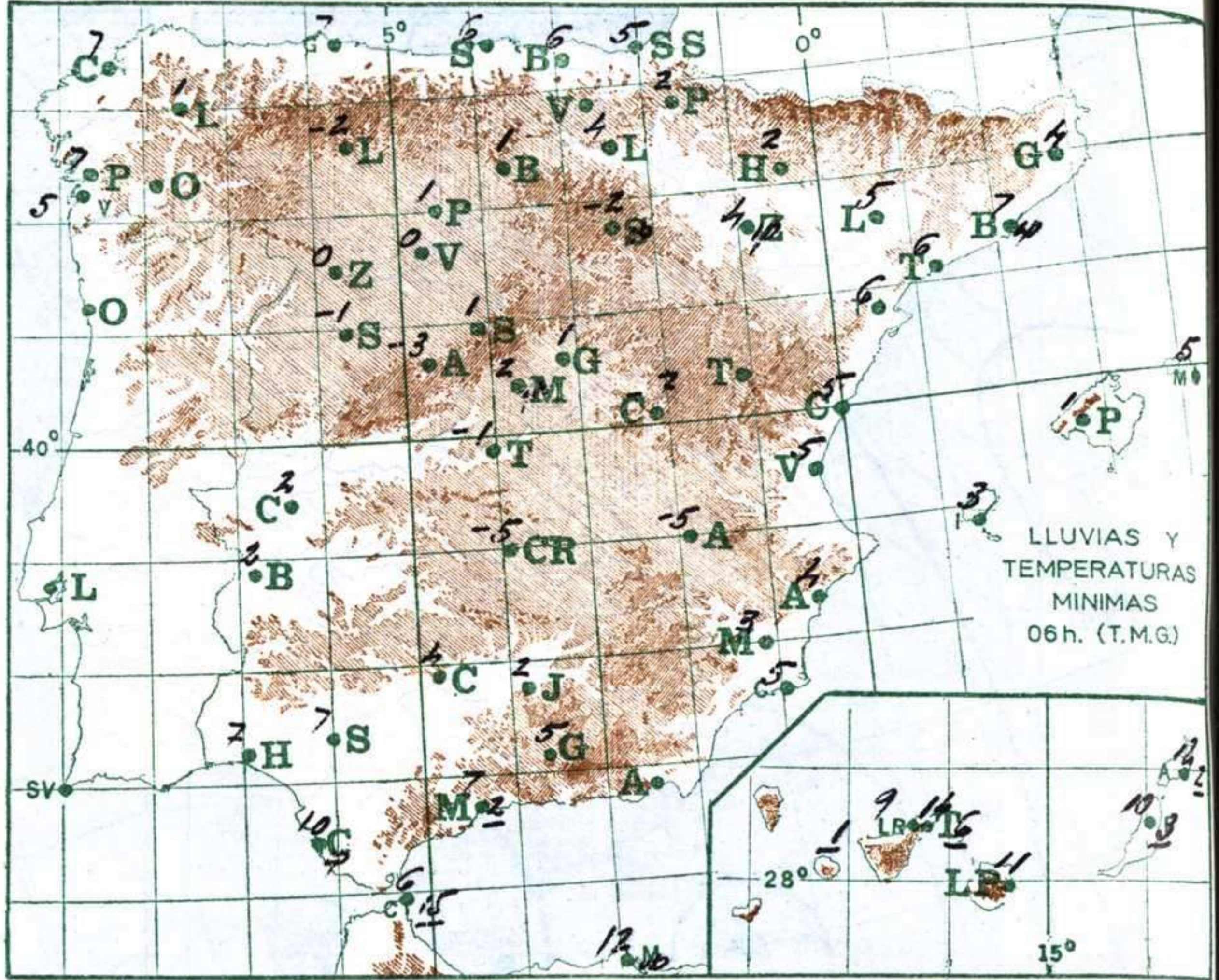
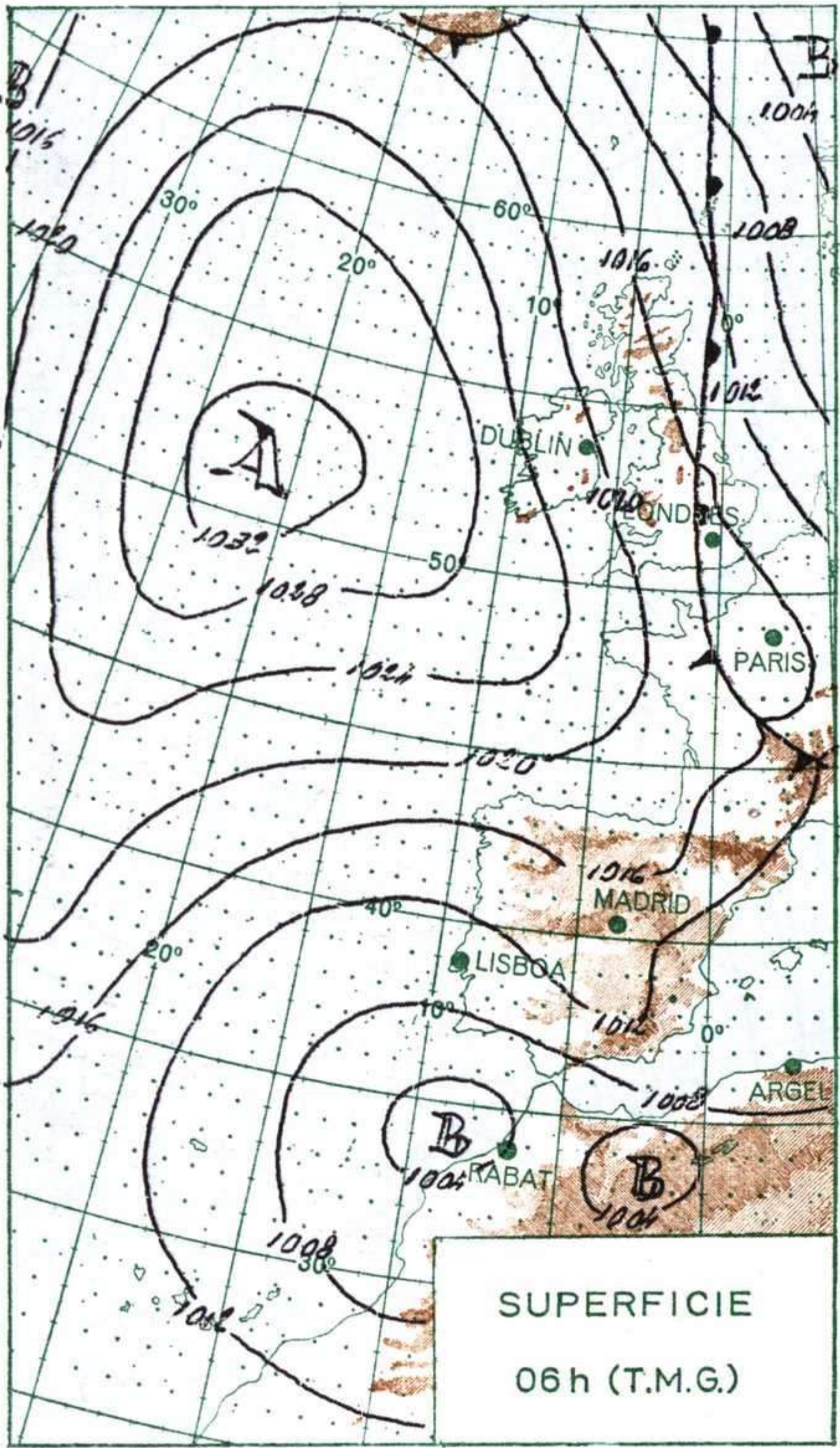
Durante la pasada noche llovió en Canarias y en el Estrecho y nevó en el Pirineo y puntos aislados del sistema Central y Aragón. Durante el día se han producido lluvias persistentes en el golfo de Cádiz y en el Estrecho y de carácter aislado en Canarias y en el Cantábrico. En Sidi Ifni llovió con intensidad. Ha mejorado el tiempo en general en la mitad septentrional, con grandes claros en el Centro, Aragón y Cataluña. Han soplado vientos del noroeste y las temperaturas han aumentado ligeramente.

PREDICCIÓN PARA EL LUNES DIA 11.

Cielo parcialmente nuboso en el Cantábrico con alguna lluvia aislada. Buen tiempo en general en la Baja Galicia. Chubascos de nieve en el Pirineo con tendencia a intensificarse a última hora. Nubosidad variable con grandes claros en León y Castilla la Vieja. Nuboso en el Centro con chubascos de nieve débiles en el sistema Central. Muy nuboso en Andalucía con lluvias en el Estrecho y en la mitad oriental de la región. Cierzo en Aragón. Nuboso o muy nuboso en Cataluña, Levante y Baleares con algún chubasco aislado, más probable en Cataluña. Sin cambios notables en las temperaturas.







R A D I O S O N D E O S

| La Coruña — 08 001 | | Zaragoza — 08 159 | | Madrid/Barajas — 08 221 | | Palma/Son Bonet - 08 302 | | Sta. C. Tenerife — 60 020 | | | | | | | | | | | | | | | | | | | | | |
|----------------------|-------|----------------------|-----|-------------------------|----|--------------------------|-----|---------------------------|-----|-----|-----|------|-------|-----|-----|-----|----|------|-------|-----|----|----|----|------|-----|----|----|----|----|
| Sondeo a 00 h. (TMG) | | Sondeo a 00 h. (TMG) | | Sondeo a 00 h. (TMG) | | Sondeo a 00 h. (TMG) | | Sondeo a 00 h. (TMG) | | | | | | | | | | | | | | | | | | | | | |
| Presiones tipo | | Presiones tipo | | Presiones tipo | | Presiones tipo | | Presiones tipo | | | | | | | | | | | | | | | | | | | | | |
| PPP | hhh | TT | DD | dd | ff | PPP | hhh | TT | DD | dd | ff | PPP | hhh | TT | DD | dd | ff | PPP | hhh | TT | DD | dd | ff | PPP | hhh | TT | DD | dd | ff |
| 1000 | 140 | 6 | 50 | 05 | 17 | 1000 | | | | | | 1000 | 113 | | | | | 1000 | 102 | 6 | 28 | 30 | 07 | 1000 | | | | | |
| 850 | 1445 | -5 | 21 | 07 | 30 | 850 | | | | | | 850 | 1428 | -1 | 06 | 04 | 10 | 850 | 1416 | -1 | | 26 | 14 | 850 | | | | | |
| 700 | 2976 | -8 | 63 | 07 | 33 | 700 | | | | | | 700 | 2951 | -9 | 26 | 08 | 03 | 700 | 2938 | -11 | | 26 | 12 | 700 | | | | | |
| 500 | 5520 | -24 | | 07 | 48 | 500 | | | | | | 500 | 4550 | -29 | 18 | 09 | 11 | 500 | 5440 | -27 | | 24 | 41 | 500 | | | | | |
| 400 | 7110 | -36 | | 07 | 65 | 400 | | | | | | 400 | 7010 | -42 | | 07 | 32 | 400 | 7030 | -36 | | 24 | 86 | 400 | | | | | |
| 300 | 9050 | -50 | | | | 300 | | | | | | 300 | 8920 | -52 | | 08 | 35 | 300 | 8980 | -47 | | 24 | 87 | 300 | | | | | |
| 250 | 10220 | -58 | | | | 250 | | | | | | 250 | 10090 | -53 | | 08 | 28 | 250 | 10170 | -54 | | | | 250 | | | | | |
| 200 | 11600 | -64 | | | | 200 | | | | | | 200 | 11520 | -56 | | 08 | 08 | 200 | 11580 | -56 | | | | 200 | | | | | |
| 150 | 13400 | -57 | | | | 150 | | | | | | 150 | 13350 | -53 | | 24 | 15 | 150 | 13430 | -55 | | | | 150 | | | | | |
| 100 | | | | | | 100 | | | | | | 100 | | | | | | 100 | | | | | | 100 | | | | | |
| 70 | | | | | | 70 | | | | | | 70 | | | | | | 70 | | | | | | 70 | | | | | |
| Puntos notables | | Puntos notables | | Puntos notables | | Puntos notables | | Puntos notables | | | | | | | | | | | | | | | | | | | | | |
| PPP | TT | DD | PPP | TT | DD | PPP | TT | DD | PPP | TT | DD | PPP | TT | DD | PPP | TT | DD | | | | | | | | | | | | |
| 1010 | 7 | 50 | 150 | -57 | | | 939 | 2 | 15 | 284 | -55 | 1006 | 5 | 25 | 140 | -55 | | | | | | | | | | | | | |
| 845 | -5 | 21 | | | | | 900 | 2 | 09 | 242 | -53 | 1000 | 6 | 28 | | | | | | | | | | | | | | | |
| 820 | -1 | 67 | | | | | 796 | -5 | | 167 | -58 | 872 | -1 | 57 | | | | | | | | | | | | | | | |
| 736 | -5 | 62 | | | | | 732 | -9 | 24 | 150 | -54 | 853 | -1 | 65 | | | | | | | | | | | | | | | |
| 626 | -12 | 63 | | | | | 700 | -9 | 26 | | | 505 | -26 | | | | | | | | | | | | | | | | |
| 318 | -47 | | | | | 610 | -17 | 47 | | | 487 | -27 | | | | | | | | | | | | | | | | | |
| 205 | -65 | | | | | 425 | -38 | 01 | | | 218 | -59 | | | | | | | | | | | | | | | | | |
| 169 | -57 | | | | | 356 | -47 | | | 190 | -54 | | | | | | | | | | | | | | | | | | |

| Estación | Sondeo a 12 h. (TMG) | | Sondeo a 12 h. (TMG) | | Sondeo a 12 h. (TMG) | | Sondeo a 12 h. (TMG) | | Sondeo a 12 h. (TMG) | | | | | | | | | | | | | | | | | | | | |
|-----------------|----------------------|-----------------|----------------------|-----------------|----------------------|-----------------|----------------------|-----------------|----------------------|-----|-----|------|-------|-----|-----|----|----|------|-------|-----|----|----|----|------|-----|-----|----|----|----|
| | PPP | hhh | TT | DD | dd | ff | PPP | hhh | TT | DD | dd | ff | PPP | hhh | TT | DD | dd | ff | PPP | hhh | TT | DD | dd | ff | PPP | hhh | TT | DD | dd |
| 1000 | 156 | 8 | 56 | 05 | 14 | 1000 | | | | | | 1000 | 102 | | | | | 1000 | 88 | 13 | 59 | 07 | 06 | 1000 | | | | | |
| 850 | 1472 | -3 | 27 | 06 | 32 | 850 | | | | | | 850 | 1433 | -1 | 56 | 04 | 19 | 850 | 1425 | 1 | 48 | 03 | 10 | 850 | | | | | |
| 700 | 3012 | -4 | | 06 | 33 | 700 | | | | | | 700 | 2973 | -7 | 57 | 07 | 18 | 700 | 2964 | -7 | 65 | 29 | 18 | 700 | | | | | |
| 500 | 5560 | -25 | | 06 | 31 | 500 | | | | | | 500 | 5510 | -25 | | 06 | 23 | 500 | 5510 | -24 | | 26 | 49 | 500 | | | | | |
| 400 | 7150 | -37 | | 06 | 32 | 400 | | | | | | 400 | 7090 | -34 | | 08 | 35 | 400 | 7100 | -34 | | 27 | 70 | 400 | | | | | |
| 300 | 9070 | -52 | | 05 | 48 | 300 | | | | | | 300 | 9000 | -54 | | 06 | 40 | 300 | 9060 | -47 | | 24 | 72 | 300 | | | | | |
| 250 | 10220 | -58 | | 05 | 48 | 250 | | | | | | 250 | 10160 | -57 | | 05 | 25 | 250 | 10250 | -48 | | 24 | 82 | 250 | | | | | |
| 200 | 11630 | -59 | | 04 | 48 | 200 | | | | | | 200 | 11580 | -56 | | 03 | 20 | 200 | 11710 | -52 | | 26 | 82 | 200 | | | | | |
| 150 | 13440 | -57 | | 03 | 44 | 150 | | | | | | 150 | 13420 | -55 | | 05 | 25 | 150 | 13580 | -51 | | 25 | 93 | 150 | | | | | |
| 100 | 15990 | -59 | | 04 | 35 | 100 | | | | | | 100 | 16000 | -57 | | 35 | 20 | 100 | 16230 | -49 | | | | 100 | | | | | |
| 70 | | | | | | 70 | | | | | | 70 | | | | | | 70 | | | | | | 70 | | | | | |
| Puntos notables | | Puntos notables | | Puntos notables | | Puntos notables | | Puntos notables | | | | | | | | | | | | | | | | | | | | | |
| PPP | TT | DD | PPP | TT | DD | PPP | TT | DD | PPP | TT | DD | PPP | TT | DD | PPP | TT | DD | | | | | | | | | | | | |
| 1012 | 9 | 60 | 148 | -57 | | | 938 | 8 | 59 | 375 | -41 | 1005 | 13 | 60 | | | | | | | | | | | | | | | |
| 805 | -6 | 20 | | | | | 915 | 4 | 59 | 296 | -55 | 815 | -2 | 38 | | | | | | | | | | | | | | | |
| 779 | -4 | 68 | | | | | 862 | 0 | 56 | 266 | -57 | 779 | -2 | 61 | | | | | | | | | | | | | | | |
| 743 | -5 | | | | | 835 | -1 | 56 | 223 | -55 | 665 | -9 | 67 | | | | | | | | | | | | | | | | |
| 560 | -19 | | | | | 811 | 0 | 57 | 187 | -57 | 275 | -50 | | | | | | | | | | | | | | | | | |
| 284 | -55 | | | | | 742 | -5 | 56 | 173 | -54 | 242 | -48 | | | | | | | | | | | | | | | | | |
| 233 | -60 | | | | | 505 | -25 | 65 | | | 213 | -52 | | | | | | | | | | | | | | | | | |
| 166 | -59 | | | | | 385 | -41 | | | | | | | | | | | | | | | | | | | | | | |

